

Critical Research, Analysis and Design Development for a 21st Century New York City Public Library

REQUIRED READING:

“Red Hook Community Reconstruction after Hurricane Sandy” - Download the text here:

<https://cunyarch3610.wordpress.com/nyc-ecological-data-info/>

“Re-Envisioning New York’s Branch Libraries” By the Center for an Urban Future - Download the text here:

<https://cunyarch3610.wordpress.com/reading-libraries/>

ASSIGNMENT DESCRIPTION:

The assignment is a design based activity requiring you to research, develop and conceptualize a new public library for Red Hook, Brooklyn. Although there is already a library in that neighborhood, are to assume that it is not satisfactorily fulfilling the needs of the community. This assumption is not without precedent. There is extensive research by the Center for a New Urban Future – <https://nycfuture.org/research/publications/re-envisioning-new-yorks-branch-libraries> - that the current state of New York Public Libraries is lacking and falls behind other major US cities. The issue at hand is that many New York City public libraries are poorly configured for how New Yorkers are using libraries today, with little space for classes, group work or individuals working on laptop computers. Meanwhile, the libraries are not fully taking advantage of new technologies, and they have only begun to design branches in ways that improve how they serve specific populations, such as seniors and teens

DIRECTIONS FOR ANALYSIS + CONCEPT DEVELOPMENT:

Developing a clear and thoughtful site analysis and concept is critical to the success of any architectural project. In addition, it is important to understanding how your assigned program, the library, relates to the site and the community around it. How you approach your analysis, what you research and how you design your final visual diagrams to describe your research will depend on what you find important.

Use this reading material and any research you need to develop a strong concept for your entire project, this concept will come from understanding the community, the site itself and your own interests as an architect. *Find a way to make the issues you see in the community relevant to your interests as an architect/designer.* These issues may already relate to some of the research you just completed for Assignment 01. Ultimately your landscape and architecture design must incorporate and resolve many issues on the site including flooding, ecology and how your library relates to the surrounding community. It will be important that you understand why these issues are important to you and how you will expand your research to include original research that you create.

Read the *“Red Hook Community Reconstruction after Hurricane Sandy”* text and identify **3 CRITICAL ISSUES** that you want to explore further. These issues can relate to anything you read about in the Red Hook text. Use the general directions above as a starting point when conducting your research. Be sure to create a clear concept and focus the data you collect on supporting that concept.

Read the *“Re-Envisioning New York’s Branch Libraries”* By the Center for an Urban and identify **3 CRITICAL ISSUES** that you want to explore further. Use this research text as a starting point to understand how a new library for Red Hook could benefit its constituents in ways that the current library cannot. Be sure to research actual issues that specifically effect Red Hook or that you see as important for the future growth of the neighborhood.

DELIVERABLES:

PART 1 - ANALYTICAL DIAGRAMMING: (2 weeks)

Working in pairs, analyze the current New York City public Library in Red Hook and the community surrounding the library. Identify the needs of the community and how the current library satisfies or neglects those needs. Create a series of **visual diagrams** and written statements describing the quality of services, civic engagement with the community, and the range of programs geared toward the diverse population of Red Hook.

Analytical diagrams are extremely useful in visually identifying and relating design constraints that have an influence on an evolving conception. When architects use analytical diagrams, they make an effort to formulate and identify the orientation of the building close to its spatial entities of the existing situation, to its environmental context, and to its functional organization. The analytical diagram or map also plays a critical role in developing a concept for your project by identifying the constituents in the community who will use your site and building. What you will be developing is a compelling *visual narrative* that clearly explains your site analysis, who your constituents or users are and what is the overall concept for your project.

Bring a typed document answering the following questions as well as a map or diagram that diagrams your research:

WHO - are you researching and designing for? **Be specific!** Children, seniors, artists, musicians? These will be your users.

WHAT - are your interests and the critical issues you've identified in Red Hook?

WHAT - data do you need to create your diagrams?

WHY - are you interests/critical issues relevant and important to Red Hook, Urban Ecology, Flooding, Libraries or any other studio theme?

HOW - will you visually describe your data in diagrams?

HOW - do you use this information to design your site/library?

PART 2 - PROGRAM AND MASSING DIAGRAMMING: (2 weeks)

Program and Massing diagrams are critical tools used to visually describe the relationship between the way a building functions (program) and the building's form (massing). Some of the important points to keep in mind when developing your massing and program diagrams are:

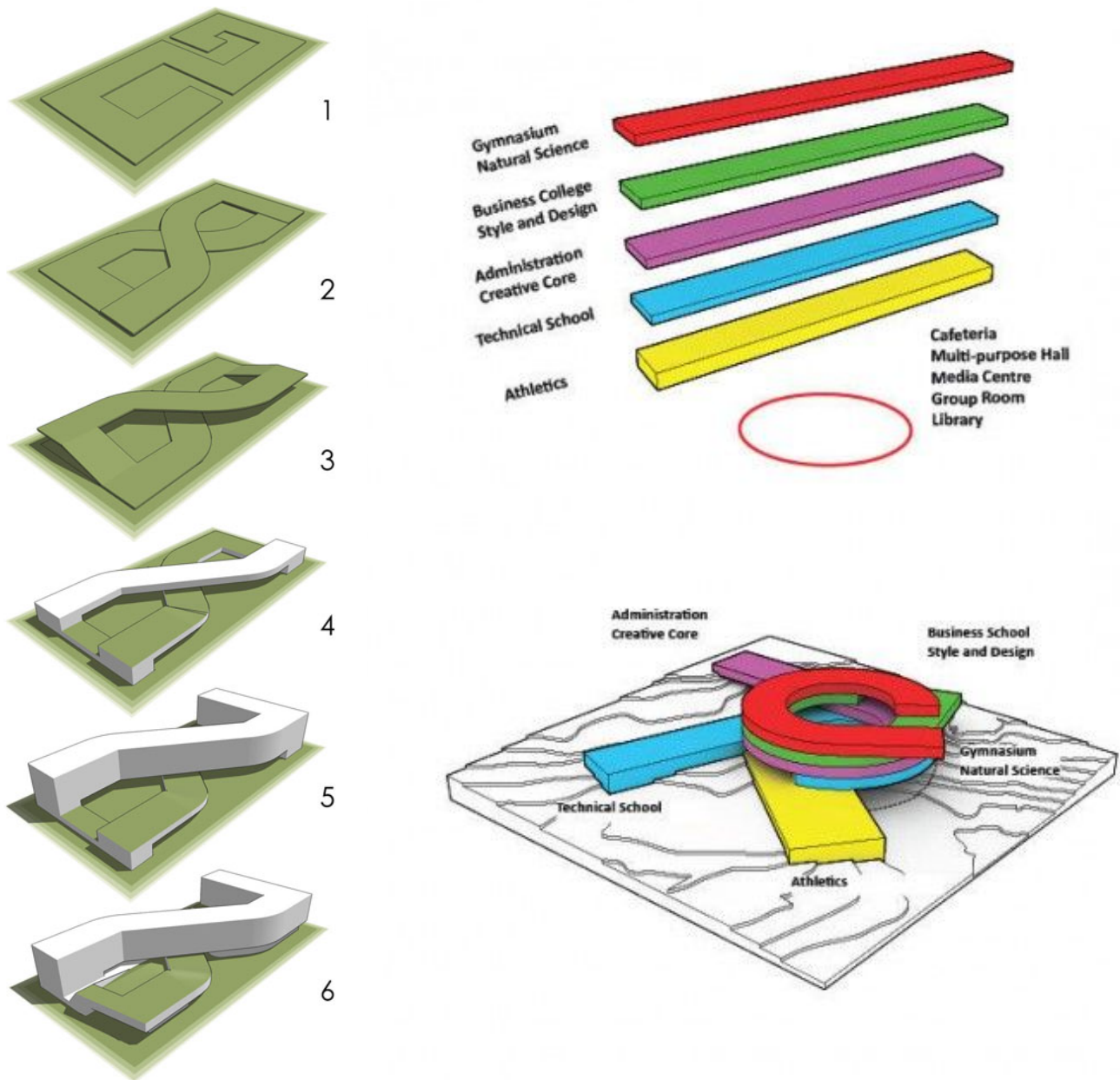
1. The ability to visually explain complex organizational, spatial, and design ideas as they relate to your building's form and function
2. How the development of your design responds to your site analysis of the surrounding community?
3. How your design incorporates and exemplifies your overall concept for your project?
4. How your design incorporates the topography and landscaping as a design element to enhance your concept?

Remember, just like your site analysis diagrams, what you will be drawing is a compelling *visual narrative* that clearly explains your design for your libraries massing and program distribution. See the following pages for diagram examples.

EXAMPLES OF MAPS + DIAGRAMS:

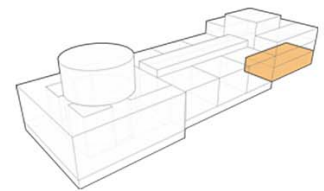
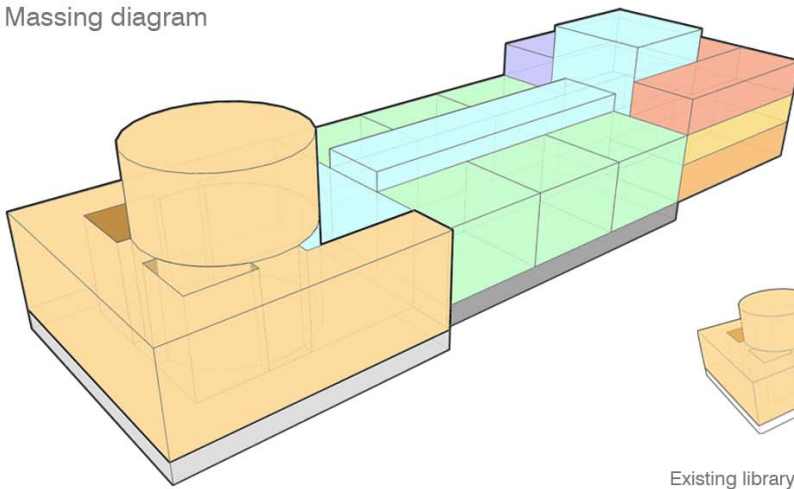
Below are examples of specific maps and diagrams that are creating a visual narrative for the designer. You can find many more examples of maps and diagrams by following the links on the class blog: <https://cunyarch3610.wordpress.com/>

EXAMPLE OF MASSING AND PROGRAM DIAGRAMS: How to develop form and relationships with site

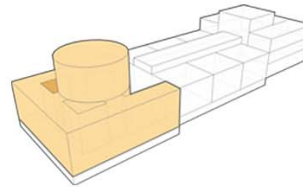


EXAMPLE OF MASSING AND PROGRAM DIAGRAMS: How to develop program relationships

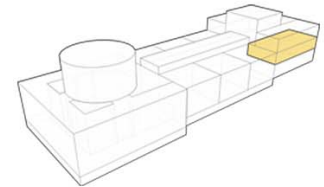
Massing diagram



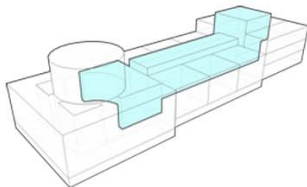
Entrance hall



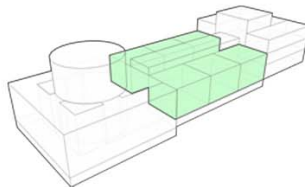
Existing library



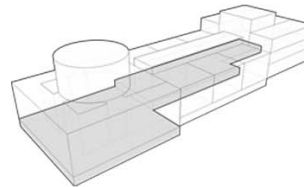
Institute of children's books



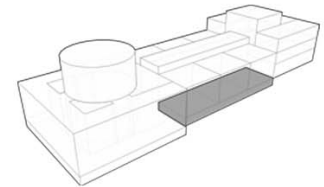
Central open space



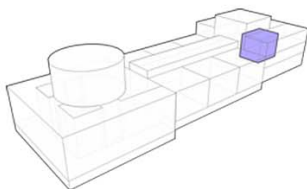
Added library wings



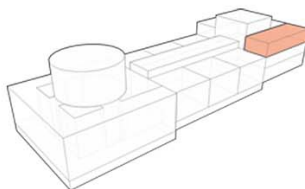
Depository



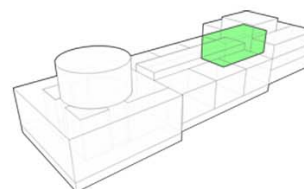
Street level retail space



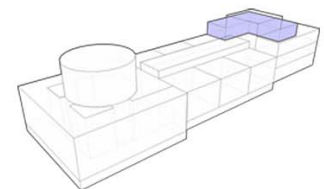
Auditorium



Learning space

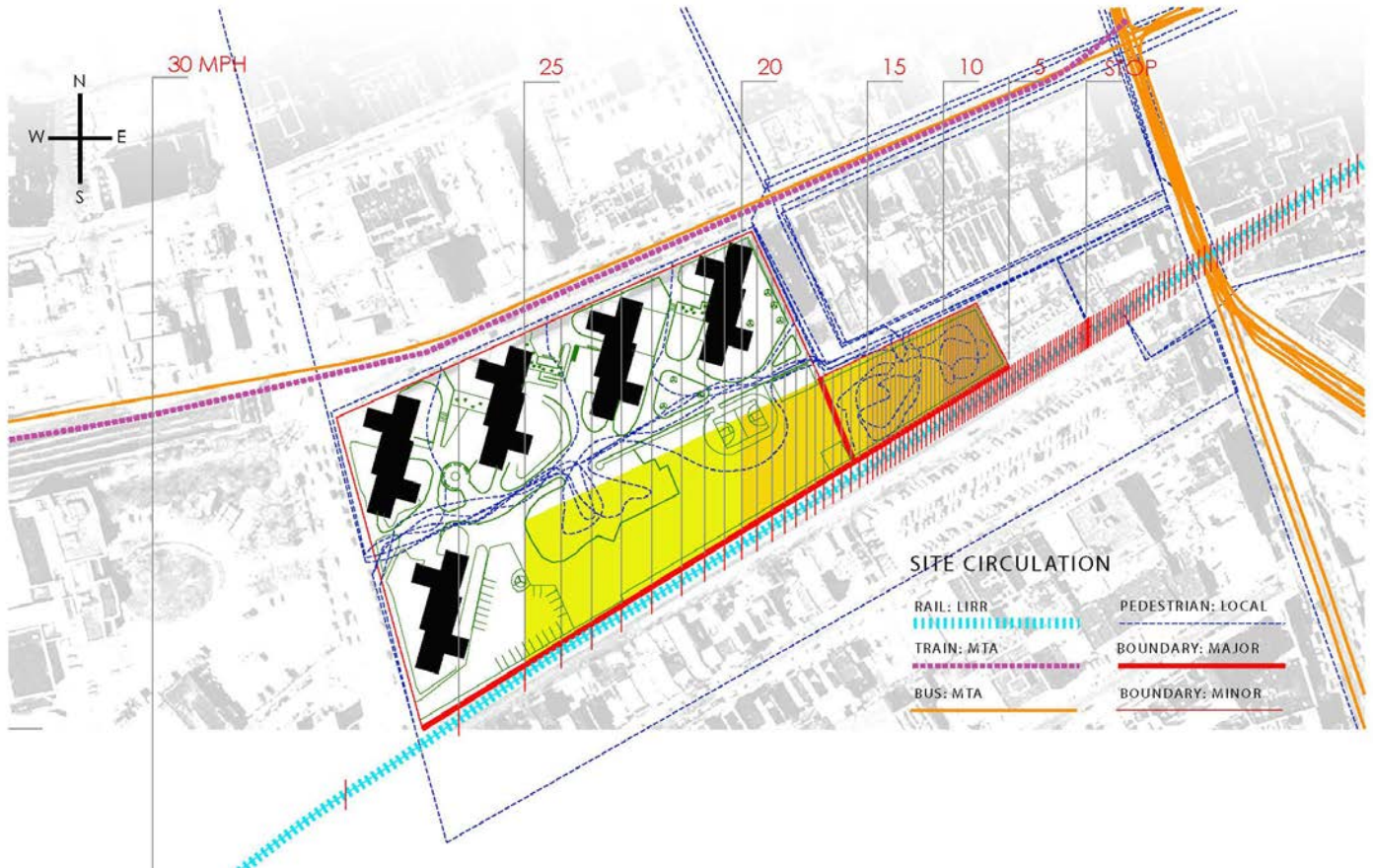


Administration



Studio space

EXAMPLE OF ANALYTICAL DIAMGRAMMING: Analysis of site circulation patterns



EXAMPLE OF ANALYTICAL DIAMGRAMMING: Analysis of income, demographics, land use and green space

