

Name Glynnis Powell  
Lab Time/Date February 2021

# The Cell: Anatomy and Division

## Anatomy of the Composite Cell

1. Define the following terms:

organelle: an highly organized intracellular structure that performs a specific metabolic functions for the cell.

cell: the simple structural and ~~for~~ functional unit of living organisms.

2. Although cells have differences that reflect their specific functions in the body, what functions do they have in common?

They grow, respond to a stimulus, the ability to metabolize and <sup>more,</sup>

3. Identify the following cell parts:

Plasma membrane

lysosome

Mitochondria

Microvilli

Inclusions

Golgi apparatus

Nucleus

Centrioles

nucleolus

microfilaments

Endoplasmic Reticulum

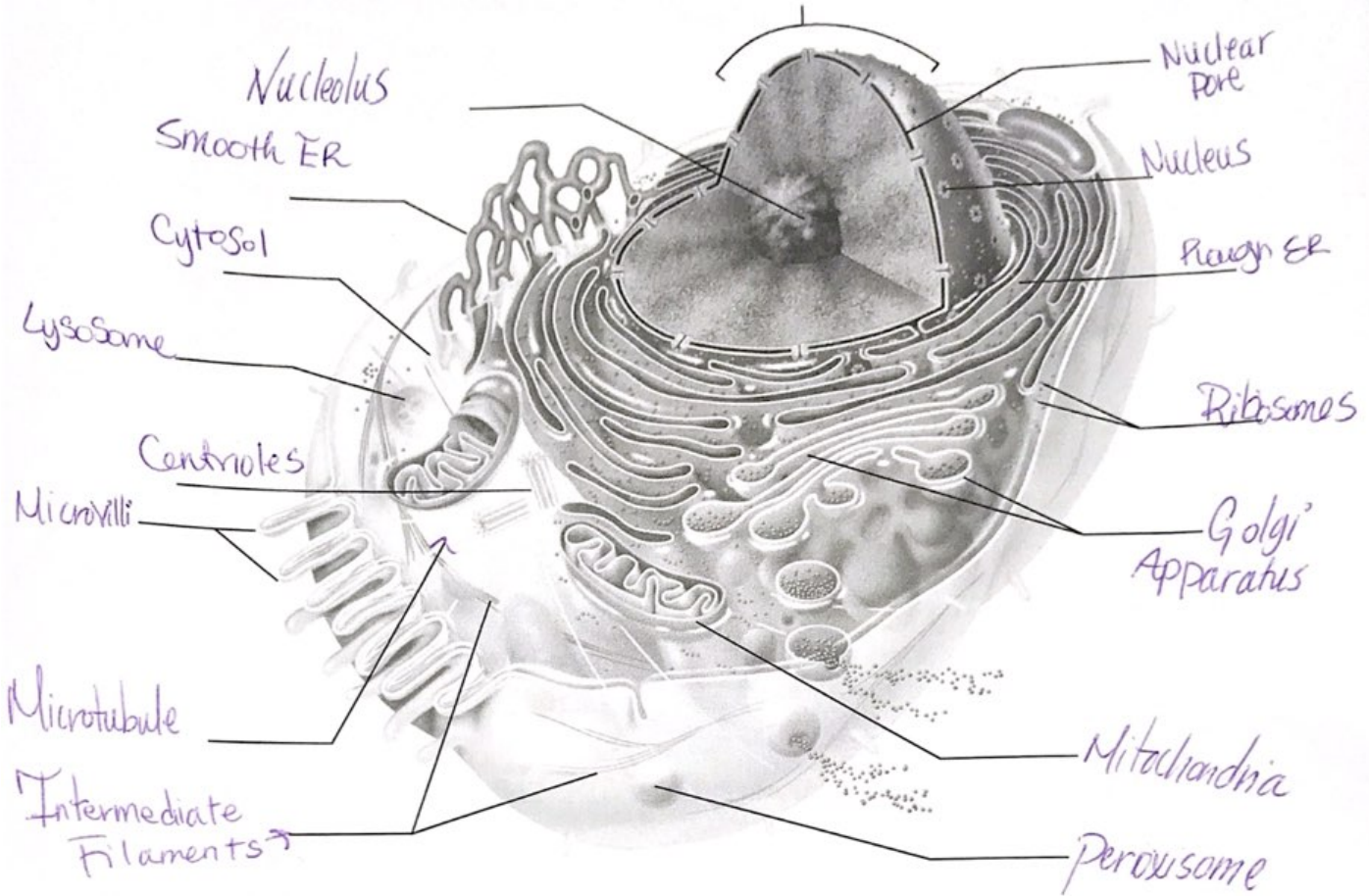
Ribosomes

Chromatin

Peroxisome

1. external boundary of cell; regulates flow of materials into and out of the cell; site of cell signaling
2. contains digestive enzymes of many varieties; "suicide sac" of the cell
3. scattered throughout the cell; major site of ATP synthesis
4. slender extensions of the plasma membrane that increase its surface area
5. stored glycogen granules, crystals, pigments, and so on
6. membranous system consisting of flattened sacs and vesicles; packages proteins for export
7. control center of the cell; necessary for cell division and cell life
8. two rod-shaped bodies near the nucleus; associated with the formation of the mitotic spindle
9. dense, darkly staining nuclear body; packaging site for ribosomes
10. contractile elements of the cytoskeleton
11. membranous system; involved in intracellular transport of proteins and synthesis of membrane lipids
12. attached to membrane systems or scattered in the cytoplasm; site of protein synthesis
13. threadlike structures in the nucleus; contain genetic material (DNA)
14. site of free radical detoxification

4. In the following diagram, label all parts provided with a leader line.



### Differences and Similarities in Cell Structure

5. For each of the following cell types, list (a) *one* important structural characteristic observed in the laboratory, and (b) the function that the structure complements or ensures.

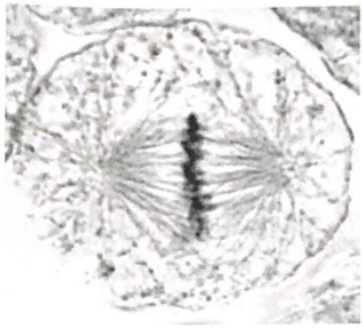
- |                     |   |
|---------------------|---|
| squamous epithelium | a. <u>the cells fit very close together looking like floor tiles.</u> |
|                     | b. <u>lining or covering tissue.</u>                                  |
| sperm               | a. <u>has a tail.</u>   |
|                     | b. <u>allows sperm to find the egg.</u>                               |
| smooth muscle       | a. <u>The cell has a long shape.</u>                                  |
|                     | b. <u>Ⓟ</u>   |
| red blood cells     | a. <u>Has NO nucleus ; shape like donuts</u>                          |
|                     | b. <u>Carries oxygen</u>  |



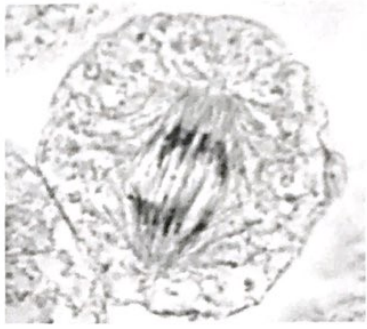
6. What is the significance of the red blood cell being anucleate (without a nucleus)? The cell can not manufacture new proteins etc, and does not ~~not~~ reproduce.  
Did it ever have a nucleus? (Use an appropriate reference.) yes If so, when? before release in blood stream
7. Of the four cells observed microscopically (squamous epithelial cells, red blood cells, smooth muscle cells, and sperm), which has the smallest diameter? Sperm Which is longest? Smooth muscle or Sperm

### Cell Division: Mitosis and Cytokinesis

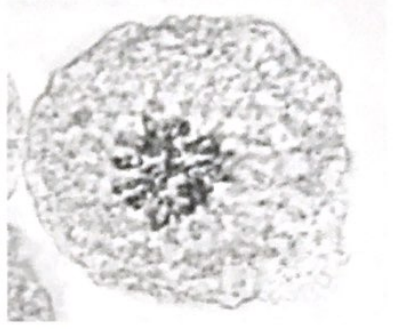
8. Identify the three phases of mitosis in the following photomicrographs.



a. Metaphase



b. anaphase



c. Prophase

9. What is the importance of mitotic cell division? Repair damaged cells and tissue by providing additional cells for body growth.
10. Draw the phases of mitosis for a cell that contains four chromosomes as its diploid or  $2n$  number.



11. Complete or respond to the following statements:

Division of the 1 is referred to as mitosis. Cytokinesis is division of the 2. The major structural difference between chromatin and chromosomes is that the latter are 3. Chromosomes attach to the spindle fibers by undivided structures called 4. If a cell undergoes mitosis but not cytokinesis, the product is 5. The structure that acts as a scaffolding for chromosomal attachment and movement is called the 6. 7 is the period of cell life when the cell is not involved in division. Two cell populations in the body that do not routinely undergo cell division are 8 and 9.

1. Nucleus
2. Cytoplasm
3. Coiled, Shortened
4. Centromeres
5. a binucleate cell
6. Spindle
7. Interphase
8. Neurons
9. skeletal and Cardiac Muscle cells.

12. Using the key, categorize each of the events described below according to the phase in which it occurs.

Key: a. anaphase b. interphase c. metaphase d. prophase e. telophase

- d 1. Chromatin coils and condenses, forming chromosomes.
- a 2. The chromosomes are V shaped.
- e 3. The nuclear envelope re-forms.
- c 4. Chromosomes stop moving toward the poles.
- c 5. Chromosomes line up in the center of the cell.
- d 6. The nuclear envelope fragments.
- d 7. The mitotic spindle forms.
- b 8. DNA synthesis occurs.
- b 9. Centrioles replicate.
- d 10. Chromosomes first appear to be duplex structures.
- c, a 11. Chromosomal centromeres are attached to the kinetochore fibers.
- e 12. Cleavage furrow forms.
- a and \_\_\_\_\_ 13. The nuclear envelope(s) is absent.

13. What is the physical advantage of the chromatin coiling and condensing to form short chromosomes at the onset of mitosis?

The physical advantage is that ~~is~~ its shortened so its much easier to manipulate during mitosis



Name Glynnis Powell  
Lab Time/Date Feb 20-2021

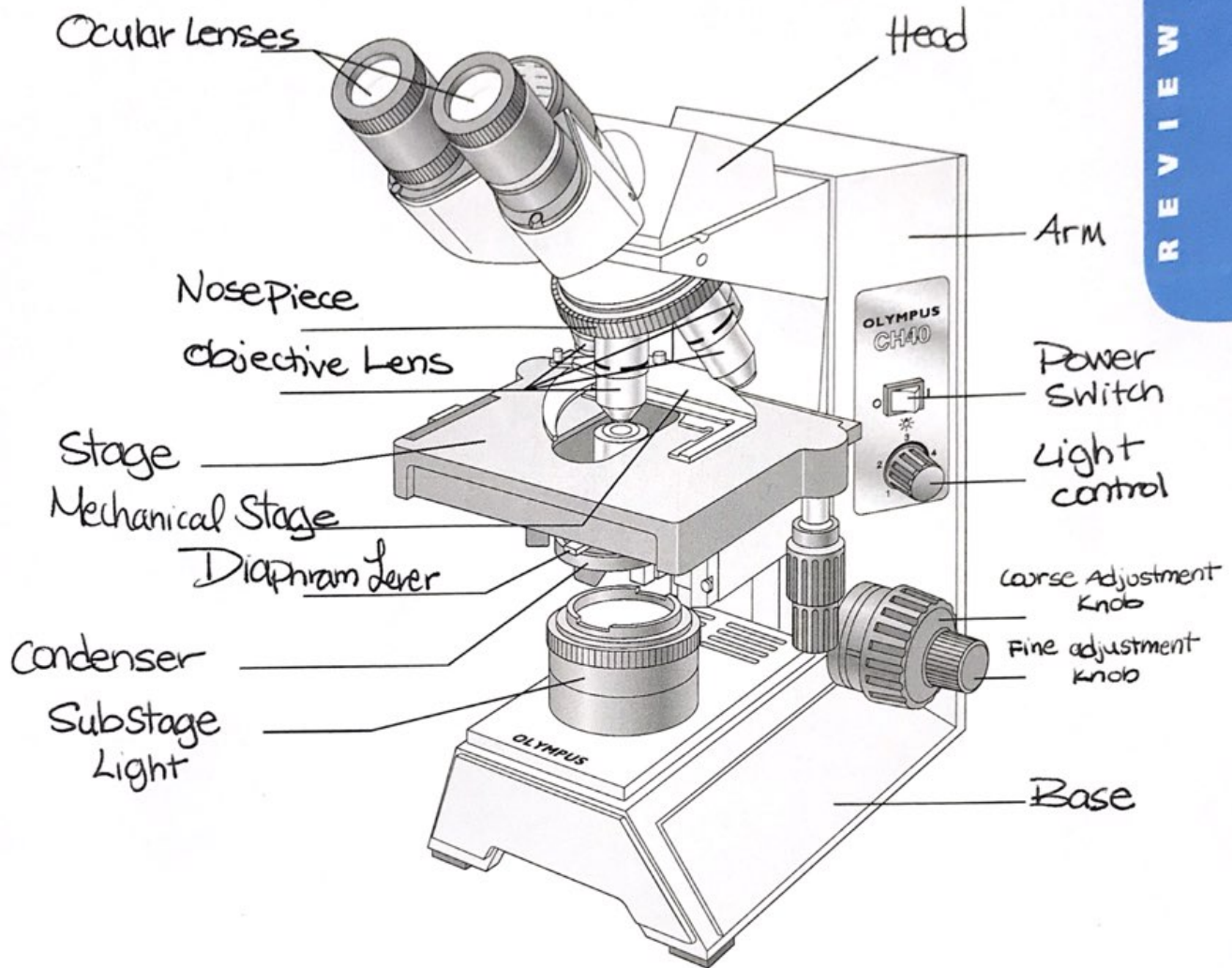
# EXERCISE 3

REVIEW SHEET

## The Microscope

### Care and Structure of the Compound Microscope

1. Label all indicated parts of the microscope.



2. Explain the proper technique for transporting the microscope.

When transporting the microscope you have to carry the microscope with two hands, one hand supporting the base and the other hand holding the arm.

3. The following statements are true or false. If true, write *T* on the answer blank. If false, correct the statement by writing on the blank the proper word or phrase to replace the one that is underlined.

- E, Only with grit-free lens paper 1. The microscope lens may be cleaned with any soft tissue.
- E, low-power 2. The microscope should be stored with the oil immersion lens in position over the stage.
- True 3. When beginning to focus, use the lowest-power lens.
- E, Always away from 4. When focusing, always focus toward the specimen.
- True 5. A coverslip should always be used with wet mounts and the high-power and oil lenses.

4. Match the microscope structures in column B with the statements in column A that identify or describe them.

Column A

- j 1. platform on which the slide rests for viewing
- d 2. used to increase the amount of light passing through the specimen
- e, i 3. secure(s) the slide to the stage
- b 4. delivers a concentrated beam of light to the specimen
- c 5. used for precise focusing once initial focusing has been done
- f 6. carries the objective lenses; rotates so that the different objective lenses can be brought into position over the specimen

Column B

- a. coarse adjustment knob
- b condenser
- e fine adjustment knob
- d iris diaphragm
- e mechanical stage
- f nosepiece
- g. objective lenses
- h. ocular
- i spring clips
- j stage

5. Define the following terms.

virtual image: Virtual image is an upright image that appears to be what it is not. ex: A mirror

resolution: is the ability to contrast ~~two~~ <sup>compare and</sup> closely two objects as different.

## Viewing Objects Through the Microscope

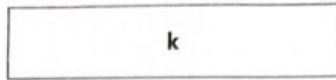
6. Complete, or respond to, the following statements:

- walking distance 1. The distance from the bottom of the objective lens to the specimen is called the \_\_\_\_\_.
- to the left 2. Assume there is an object on the left side of the field that you want to bring to the center (that is, toward the apparent right). In what direction would you move your slide? \_\_\_\_\_
- field 3. The area of the specimen seen when looking through the microscope is the \_\_\_\_\_.
- 95x 4. If a microscope has a 10× ocular and the total magnification at a particular time is 950×, the objective lens in use at that time is \_\_\_\_\_ ×.
- increases contrast 5. Why should the light be dimmed when looking at living (nearly transparent) cells?
- parfocal 6. If, after focusing in low power, only the fine adjustment need be used to focus the specimen at the higher powers, the microscope is said to be \_\_\_\_\_.
- 0.75 mm 7. If, when using a 10× ocular and a 15× objective, the field size is 1.5 mm, the approximate field size with a 30× objective is \_\_\_\_\_ mm.

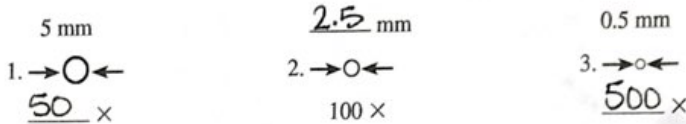


0.4 mm 8. If the size of the high-power field is 1.2 mm, an object that occupies approximately a third of that field has an estimated diameter of 0.4 mm.

7. You have been asked to prepare a slide with the letter *k* on it (as shown below). In the circle below, draw the *k* as seen in the low-power field.



8. Figure out the magnification of fields 1 and 3, and the field size of 2. (Hint: Use your ruler.) Note that the numbers for the field sizes below are too large to represent the typical compound microscope lens system, but the relationships depicted are accurate.



9. Say you are observing an object in the low-power field. When you switch to high-power, it is no longer in your field of view.

Why might this occur? This might occur because the field decreases correspondently as magnification increases gradually, meaning unless the object is centered at a low power, it might be the outside of the higher-power field.

What should be done initially to prevent this from happening? Could be prevented by happening by centering that object.

10. Do the following factors increase or decrease as one moves to higher magnifications with the microscope?

resolution: Increases amount of light needed: Increases  
 working distance: decreases depth of field: decreases

11. A student has the high-dry lens in position and appears to be intently observing the specimen. The instructor, noting a working distance of about 1 cm, knows the student isn't actually seeing the specimen.

How so? because the working distance for the h.p. lens is closer to 1mm.

12. Describe the proper procedure for preparing a wet mount.

First, place the specimen on the slide using an medicine dropper. Mix the specimen with a toothpick. Use a cover slip with forceps so the coverslip touches one side of the specimen and then carefully take the coverslip and angle it onto the specimen.

13. Indicate the probable cause of the following situations arising during use of a microscope.

a. Only half of the field is illuminated: The lens may be rotated into the wrong place.

b. Field does not change as mechanical stage is moved: If the slide is positioned the wrong way on the clamp on the mechanical stage.