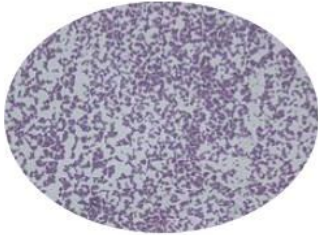
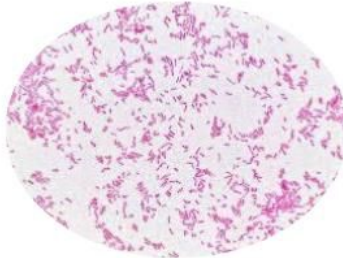


# Simple Staining & Smear Preparation

## Results & Observations



Organism: S. epidermidis



Organism: E. coli

## Interpretation & Questions:

**1. You forgot to heat-fix your slide. What should you expect to see?**

Heat-fixing the slide fixes the bacteria to the slide surface. If this step is skipped, the bacteria in the smear would be washed off of the slide during the staining and decolorization steps. You would not see anything on the slide under the microscope.

**2. How would you describe the morphology and arrangement of the cells in your stained preparations?**

- S. epidermidis cells are small gram-positive (**purple**) cocci that form grape-like or *staphylo-* arrangements of cells.
- E. coli cells are gram-negative (**pink**) bacilli.

**3. You are interning in the doctor's office described in the case file. You use some of the ear exudate to make a slide, which you then heat-fix and stain. Under the microscope, you see large clusters of spherical cells. Which organism are you probably seeing: *Staphylococcus* or *Pseudomonas*? Explain.**

*Staphylococcus*, because the term coccus represents an arrangement of spherical shaped cells and *staphylo-* represents a cluster of cocci.