

Learning Places fall 2016

Archive Report-New York Public Library



Maryse Maurice

11/9/16

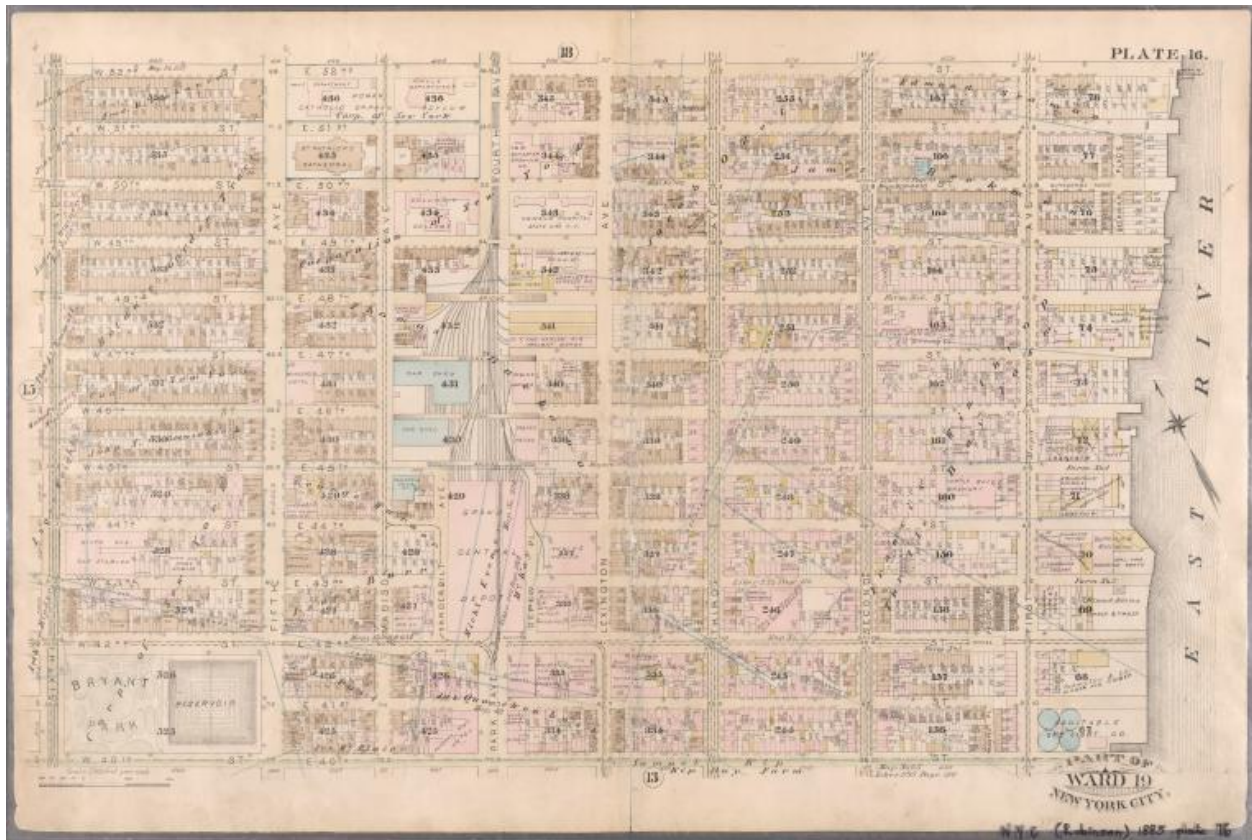


Plate 16: Bounded by W. 52nd Street, E. 52nd Street, (East River) First Avenue, E. 40th Street, and Sixth Avenue.

Creator: Robinson, E. (Elisha); Pidgeon, R. H. (Roger H.)

Title: Atlas of City of New York: embracing all territory within its corporate limits from official records, private plans & actual surveys / by and under the supervision of E. Robinson & R.H. Pidgeon, civil engineers.

Date Issued: 1885

Place: New York

Publisher: E. Robinson Co.

This is one of the maps from the New York Public Library Archive that we have looked at. It is a well detailed map. This map shows Grand Central Depot and the surrounding areas. Why this map is interesting to me and how it relates to topics we have discussed in class? This map is interesting to me because I have access to see how Grand Central Depot was like in 1885. It helps me figure out what was there, and how it was before the renovation. And based on the map I am able to kind of judge what have been done. And since we visited and learned about Grand

Central, we can compare how much it changed whether economically, or socially. At that time, Grand Central was just a depot.

Citation: Lionel Pincus and Princess Firyal Map Division, The New York Public Library.

(1885). Plate 16: Bounded by W. 52nd Street, E. 52nd Street, (East River) First Avenue, E. 40th Street, and Sixth Avenue. Retrieved from

<http://digitalcollections.nypl.org/items/510d47da-f071-a3d9-e040-e00a18064a99>



Creator: Faden, William (1750?-1836); Kitchin, Thomas (d. 1784); Ratzer, Bernard

Title: Plan of the city of New York in North America: surveyed in the years 1766 & 1767 / B. Ratzer, lieutt. in His Majestys 60th or Royal American Regt. ; Thos. Kitchin, sculpt., engraver to His Late Royal Highness, the Duke of York, &c.

Date Issued: 1776-01-12

Place: London

Publisher: Jefferys & Faden, corner of St. Martins Lane, Charing Cross

This map covers Manhattan to Midtown area and parts of Brooklyn. It is a military map as picture clearly on the map. It includes dedications to captain general and governor in chief. It is more likely for political purposes.

Citation: Lionel Pincus and Princess Firyal Map Division, The New York Public Library.

(1776-01-12). Plan of the City of New York in North America: surveyed in the years 1766 @ 1767 retrieved from

<http://digitalcollections.nypl.org/items/510d47da-f071-a3d9-e040-e00a18064a99>