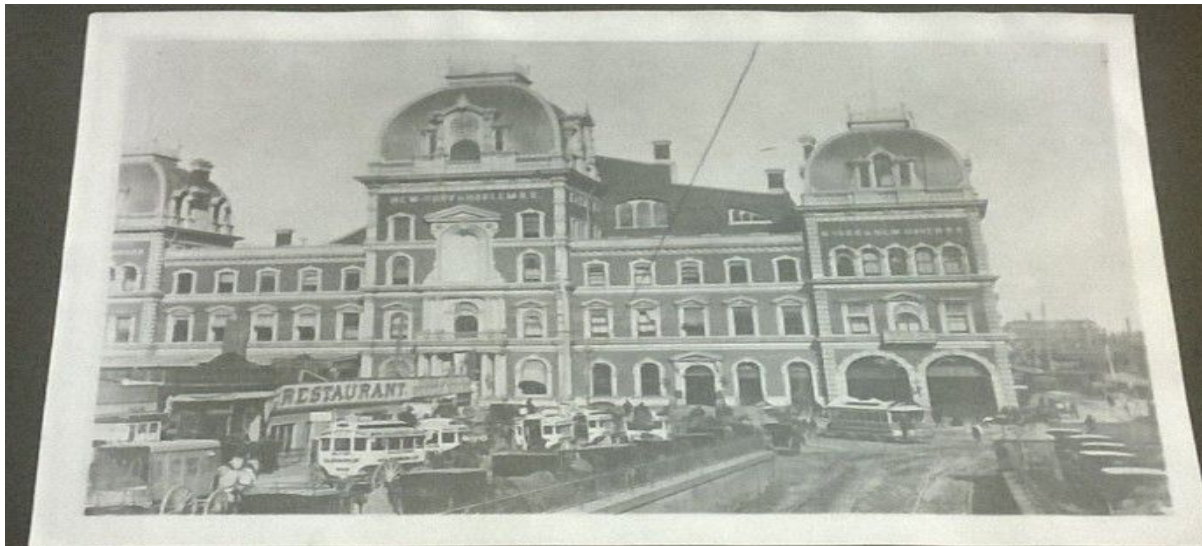
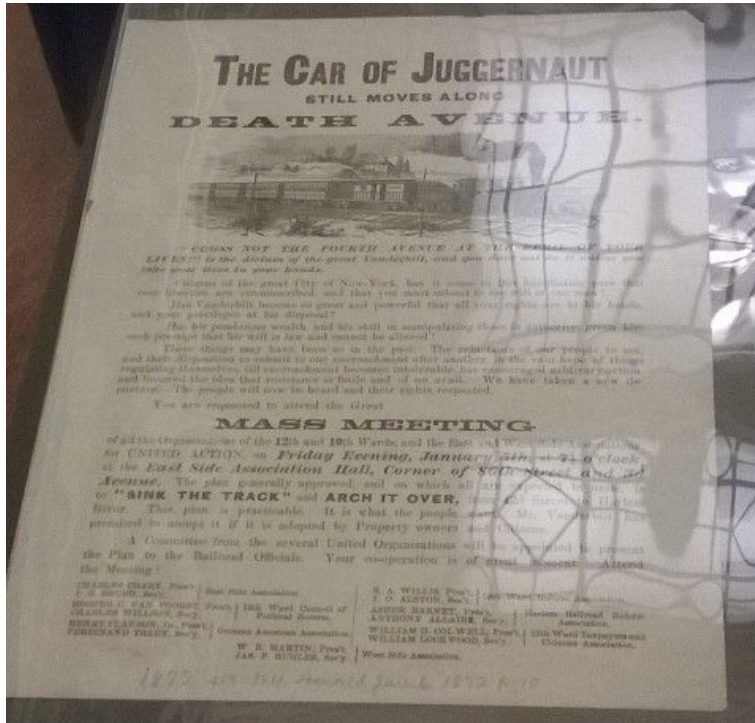


Archive Reflection #1

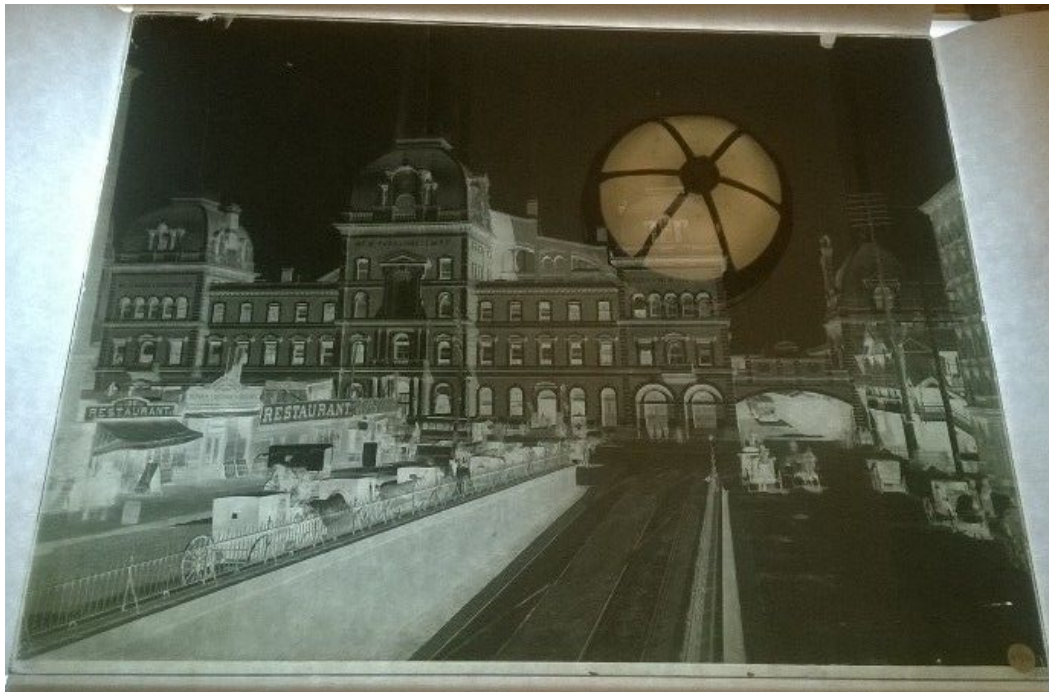
By: Jesus Mendoza



The Car of Juggernaut still moves along Death Avenue
January 6, 1872
: NY Herald

Secondary Source

This specific article actually managed to catch my eye. I never would have thought that so many lives were actually lost on fourth avenue due to trains. I have always pictured Manhattan streets full of vehicles and paved roads. Never did I once think that trains crossed on the streets of Manhattan. The article itself called for a meeting with some the most important people within the city. The tragedies were becoming so severe that multiple people had to come together to address the matter. I tried to look more into this article on my own but could not find much more about the subject matter. Hopefully in the future I can learn much more about this topic.



Grand Central Station 4th ave looking north from 41st St.
NY Historical Society Department of Prints, Photographs, and
Architectural Collections
Unknown
Secondary - Reprinted from original

This was a wonderful photo that was printed on glass. It was first taken 1896 and it shows the frontal view of the Grand Central Station. This was before it was demolished and rebuilt as the Grand Central Terminal. It is a fascinating photo because it's an actual glass negative. The photo allows us to see how original photos were taken before they were developed.

- 1. Did the deaths on fourth avenue contribute to the creation of Grand Central Terminal?**
- 2. How many people were actual victims of the passing trains?**