

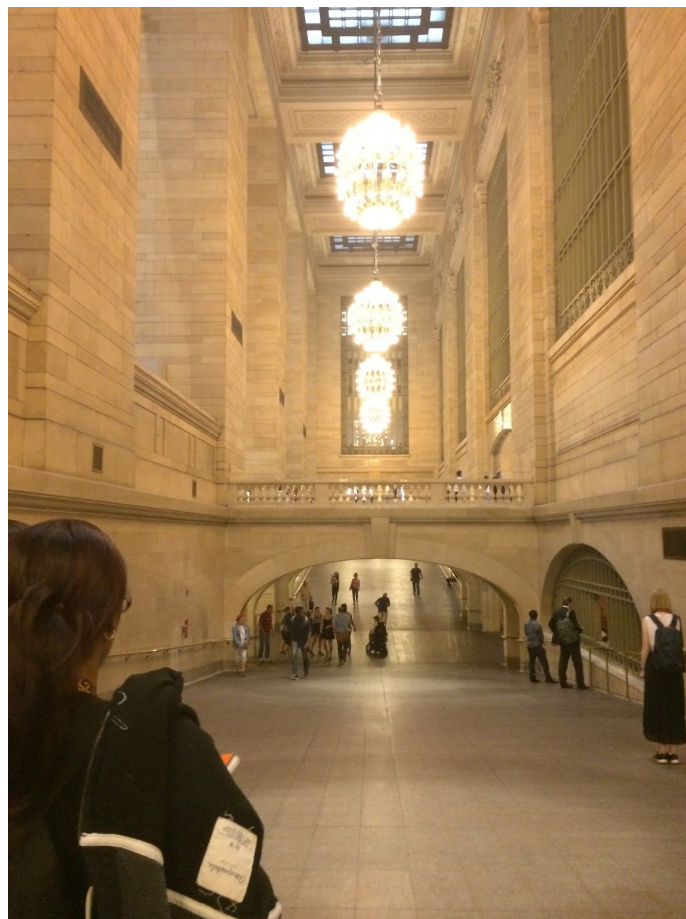
Learning Places Fall 2016

SITE REPORT #1

Grand Central Terminal

Nagisa Maruyama

09.18.2016



INTRODUCTION

The class visited the Grand Central Terminal which is located on East 42nd Street. We observed both the exterior and the interior of the building, sculptures, complex designs, decoration, and spaces for specific purpose. Also, we understood the structure of the Grand Central Terminal generally.

SITE DOCUMENTATION (photos)



I took this picture from the corner of 42nd Street and Vanderbilt Avenue. The Grand Central Terminal is one of the most famous landmark, so most tourists also took picture from here. This picture shows clearly what kind of shape the Grand Central Terminal is. The shape of the Grand Central Terminal is square and Beaux-Arts architectural style was adopted. There are three statues, an eagle, Vanderbilt, and the top is Mercury, god of travel and commerce.

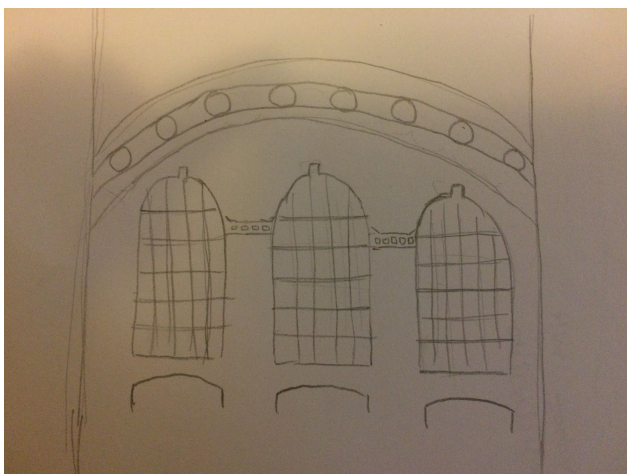


We could curious experience in this space. Voice is thrown clear across the chamber via a mechanism by which it telegraphs across the surface of the arch, thereby appearing audibly in corners into which you did not speak.

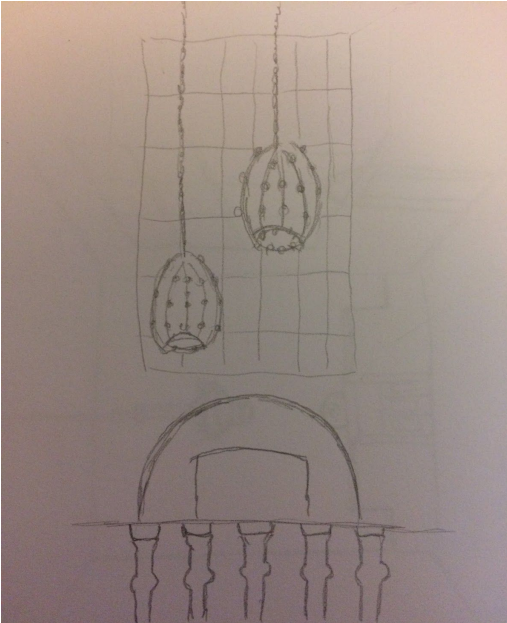


This space was a waiting room for long-distance commuters. Hall embodies elegance and grandeur. Now, this space have changed to the food hall. As America shifted its transportation habits from trains to cars, there was a steep decline in long-distance traffic, so there was no need for a waiting room.

SITE DOCUMENTATION (sketches)



I sketched three windows at the main concourse. When I drew this, some people was walking behind these windows. I did not know that there are walkways. These walkways connect the offices above the Grand Central Terminal, so the employees do not have to walk through the busy concourse.



I sketched two chandeliers and the mirror behind. These chandeliers demonstrate how those who built the Grand Central Terminal a century ago wanted train users to feel an experience of grand luxury. The mirror reflects light, this makes elegant atmosphere more.

GENERAL NOTES:

- Cornelius Vanderbilt, an American business magnate

INSIGHTS/DISCOVERIES

Actually, I have been to the Grand Central Terminal before many times, but there was lots of things I didn't know. First, I paid attention to designs of the building, walls, lights, and tiles. Three greek gods are carved on surface of the building. Inside the building, different types of tiles are used for walls and floors. There are many chandeliers in the Grand Central Terminal. All of these designs are very detailed. I think that architects had a strong preference for the grand Central Terminal. Second, I found few big clocks in the Grand Central Terminal everywhere. Most people have cell phones at the present time, so we do not really watch big clocks. However, there were no cell phones and there were many passengers in days of old. I imagined that people were waiting trains around clocks.

KEYWORDS/VOCABULARY & DEFINITIONS

Beaux-Arts: Of or relating to an architectural style originating in France in the late 19th century and characterized by classical forms, symmetry, rich ornamentation, and a grand scale.

Mercury: God of shopkeepers and merchants, travelers and transporters of goods, and thieves and tricksters.

Concourse: A large, open part of a public building, especially an airport or a train station.

Luxury: A thing that is expensive and enjoyable but not essential.

Chandelier: A large round frame with branches that hold lights or candles.

QUESTIONS for Further RESEARCH

1. How much are chandeliers?
2. When walkways were set up?