

HALL 1121: WRITING FOR THE PUBLIC



DR. CARRIE HALL

Office: Namm 525

chall@citytech.cuny.edu

<https://openlab.citytech.cuny.edu/hall1121spring19>

1121-D494

Namm 704 T/ Th 4:00-5:15

OFFICE HOURS: Tues 2:30-3:30

or by appt.

WELCOME!

Hello and welcome to 1121. In this class, you'll continue the work you did in 1101, writing about your own experiences, but you will also add some more tools to your toolbox. That is, you'll write as a member of the community, investigating the experiences of others, looking at community problems and the best ways to solve them.

In this course, I hope you will find your public "writer's voice." I hope that you think about who you want to reach and who you want to be with your writing. And I hope you learn to reach those goals

No matter your field of study, writing is a part of your future career (like it or not!) so we are here to find the way to hone the skills you already have and to learn some new ones. Glad to have you!

MAJOR ASSIGNMENTS

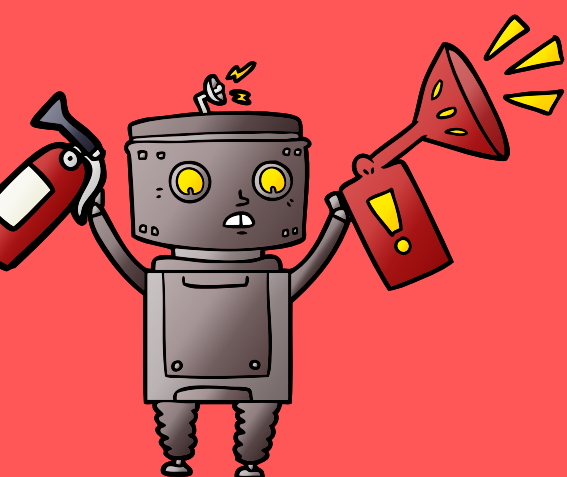
In this class, you have five major units. These are all **REQUIRED** (as are revisions.) This means if you do not turn **ALL** these projects in, you will fail the class.

They also must be turned in on-time! Papers will be marked down 1/3 of a letter grade (A- to B+, C to a C-) for each day they are late for the first three days. After that, they will be marked down a **FULL** letter grade. (from a B- to a C-) This means that papers over six days late will fail.

There is an exception! If you need an extension on a paper and you speak to me **BEFORE** it's due, I am likely to give it to you. Please note that "speak to me" actually means that you hear back from me. That is, emailing me the night before something is due and not receiving a response is **NOT** speaking to me.



HOMEWORK



Please note! You will also have homework for this class, which is all in preparation for the next day's class and is all to help you get ready for your upcoming paper. For this reason, I do not accept late homework!

Your homework assignments will be posted on the OpenLab course website (discussed below.) Homework assignments are not graded individually, but they are factored into the grades for each unit.