

## GRADING.

- UNIT 1: 15%
- UNIT 2: 15%
- FIRST REVISION: 10%
- UNIT 3: 20%
- UNIT 4: 15%
- UNIT 5: 10%
- PARTICIPATION: 15%

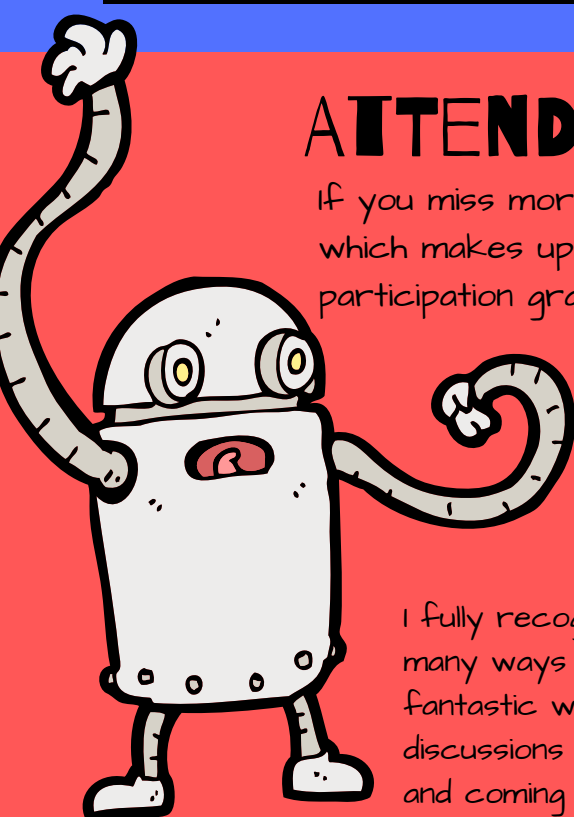
we do NOT have a final exam!



These are the general breakdowns for grading. Remember that the homework is factored into each unit grade; it will also help you write a better paper.

Despite these percentages, I grade for improvement. That is, if your writing improves throughout the semester, which it usually does with hard work, your grade will improve. It is completely possible to get very low grades on the first two papers and an A in the class, if you keep working hard, even though that's not quite mathematically possible.

However, I don't extend this same leniency to lateness (unless you have spoken to me BEFORE the paper was due and you don't make a habit of turning work in late.) That is, if you failed a paper or got a low grade because you turned a paper in late, that grade stands.



## ATTENDANCE AND PARTICIPATION

If you miss more than FIVE classes, you will fail your participation grade, which makes up 15% of your final grade. You can also fail the participation grade by:

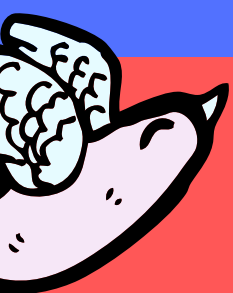
- Texting in class. (I might not comment on it, but I always see it.)
- Coming to class unprepared.
- Regularly coming to class late.
- Wearing headphones in class.
- TALKING ON THE PHONE IN CLASS (are you kidding me with these last two?)

I fully recognize that some people are more talkative than others. There are many ways to participate besides just talking: first of all, LISTENING is a fantastic way to participate. Also, taking part in online and small group discussions and coming to class regularly and on time, doing your homework, and coming to see me during office hours are all ways to participate.

## OPEN LAB

In this class, we do not have any required textbooks. All required texts will be handed out by me, found by you online or at the library, or posted on our course website on OpenLab. You MUST sign up to the course website within a week!

The reason for this is because OpenLab is where I will post all of our assignments and where you will post much of your homework for the course. You will also need to have your own e-Portfolio (it's easy to set up,) where you will post your "big" papers.



## RESOURCES

Look, school is hard and so is life! Sometimes you might need some help. So where can you go?

COUNSELING: You can call or stop by the counseling center in Namm 108 (ph: 718-260-5030) or check out their website at: <http://www.citytech.cuny.edu/counseling/>. They're here to help you with educational, psychological and career development, and also have some grants for emergency situations.

If you are struggling with learning, you might want to check out The Center for Student Accessibility at: 718-260-5143 <http://www.citytech.cuny.edu/accessibility/> or in A237. They can help people with diagnosed disabilities get extra resources, and they can get you diagnosed if you think you may have a disability.

The Veterans Support office is in A236. 718-260-5143.

I also strive to be a resource. Please come to me if you need help!

