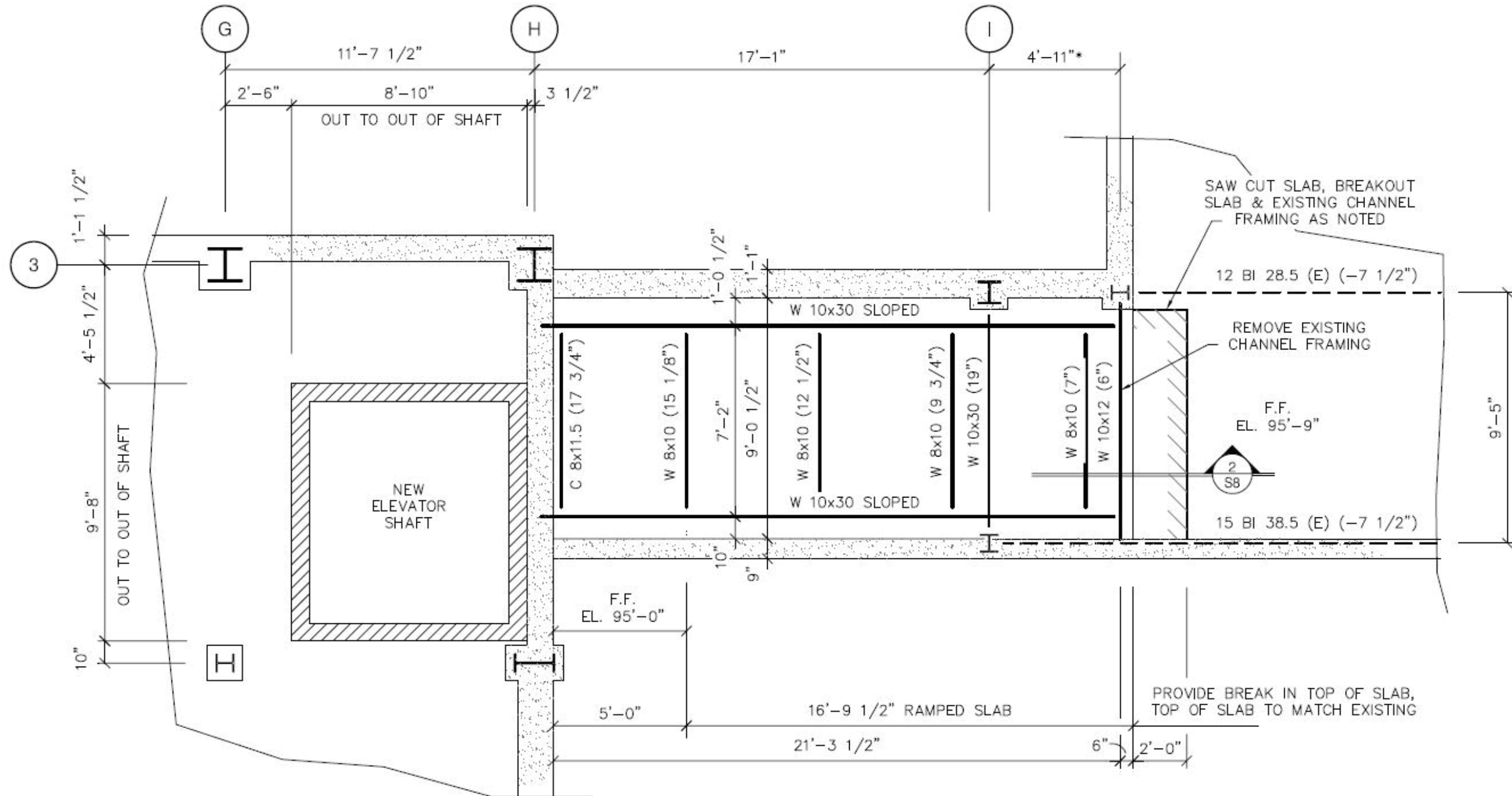
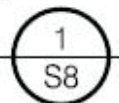


FRAMING PLANS - NEW RAMP

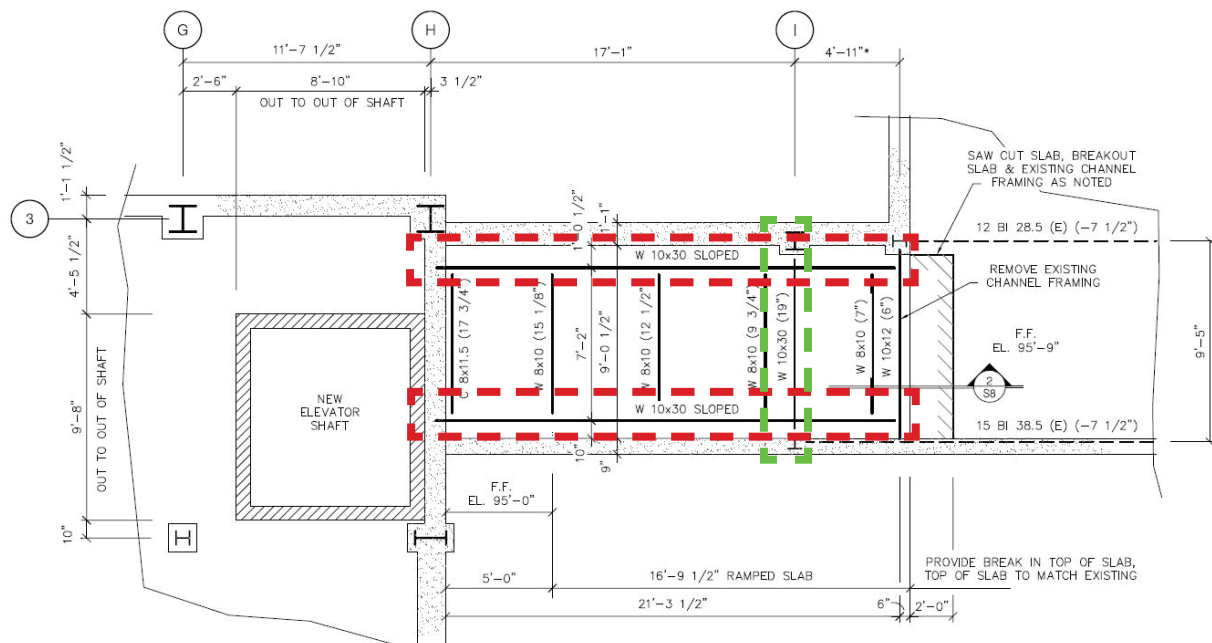
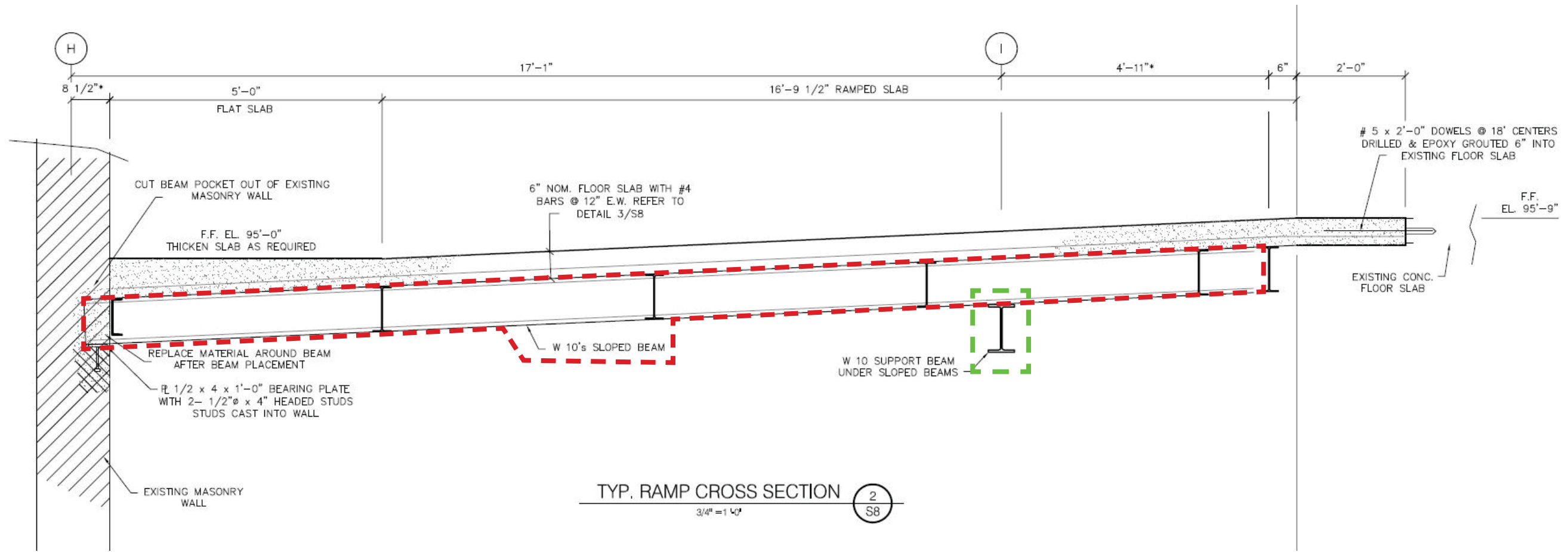


BASEMENT MEZZANINE
PARTIAL FLOOR PLAN

1/4" = 1'-0"



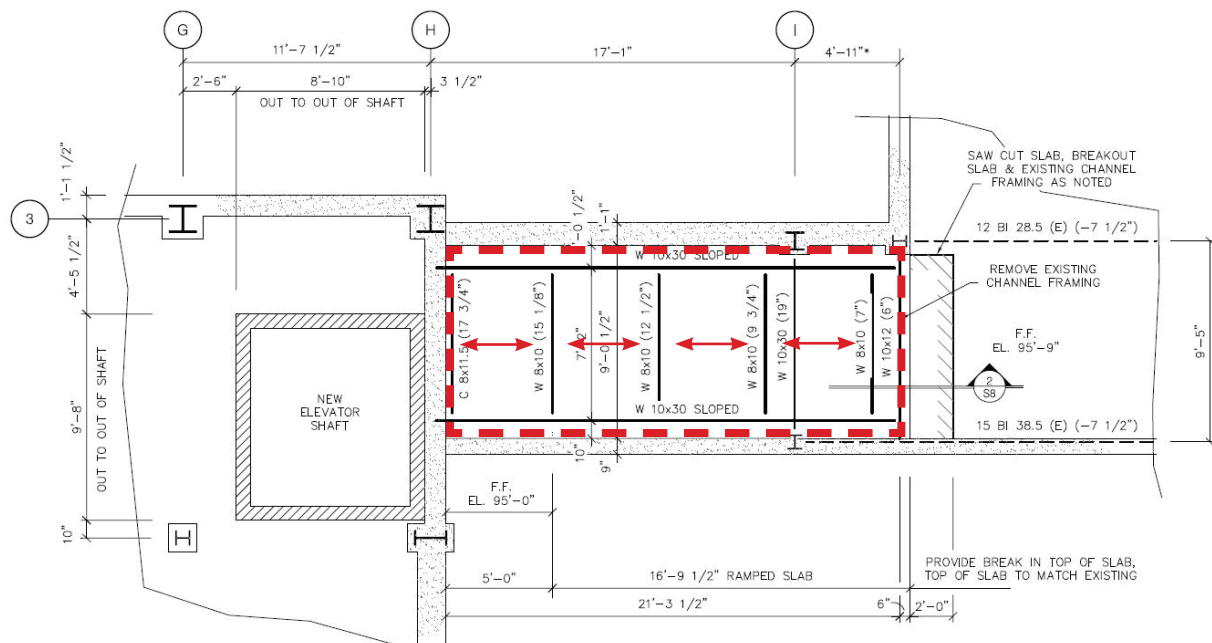
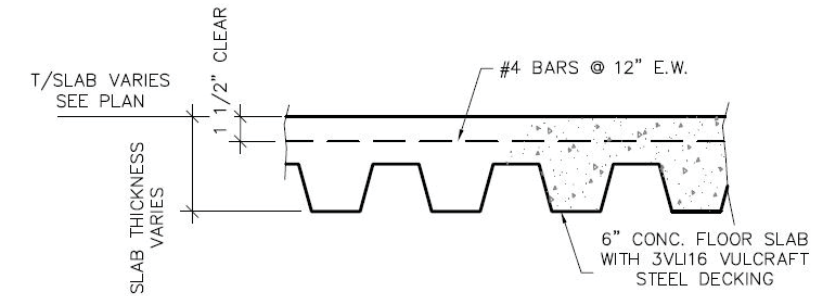
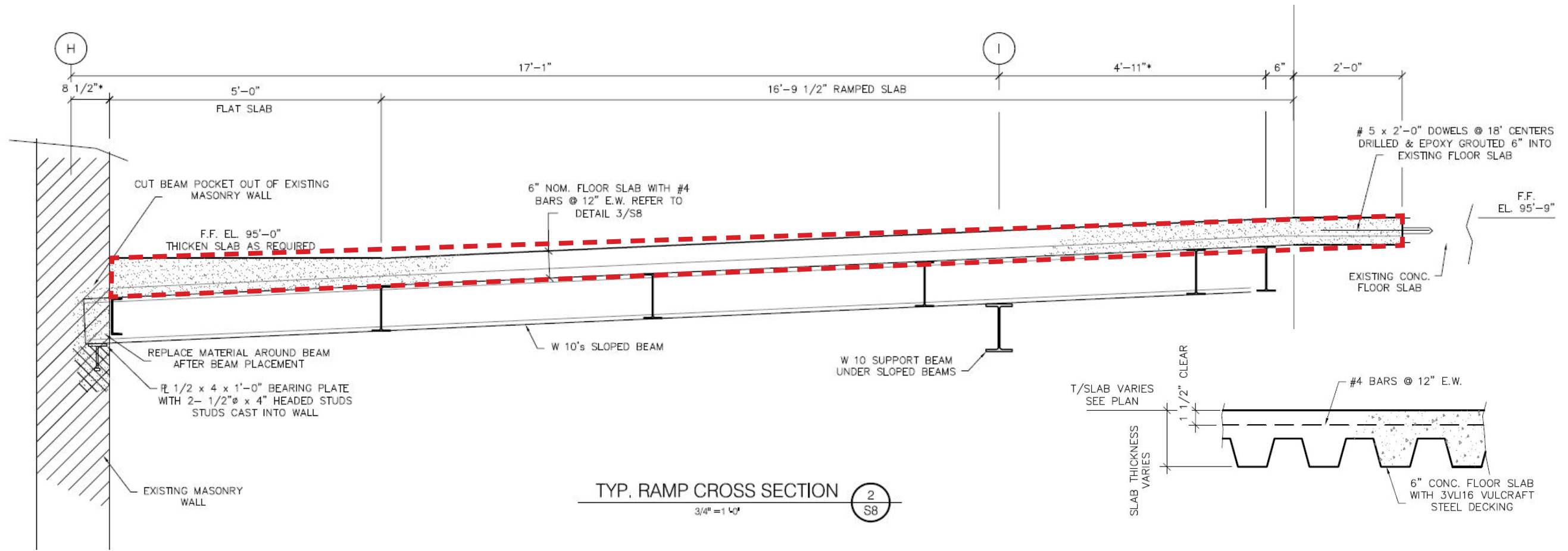
FRAMING PLANS - NEW RAMP



GIRDERS:

LARGE, PRIMARY STRUCTURAL MEMBERS USED TO SUPPORT THE BEAMS

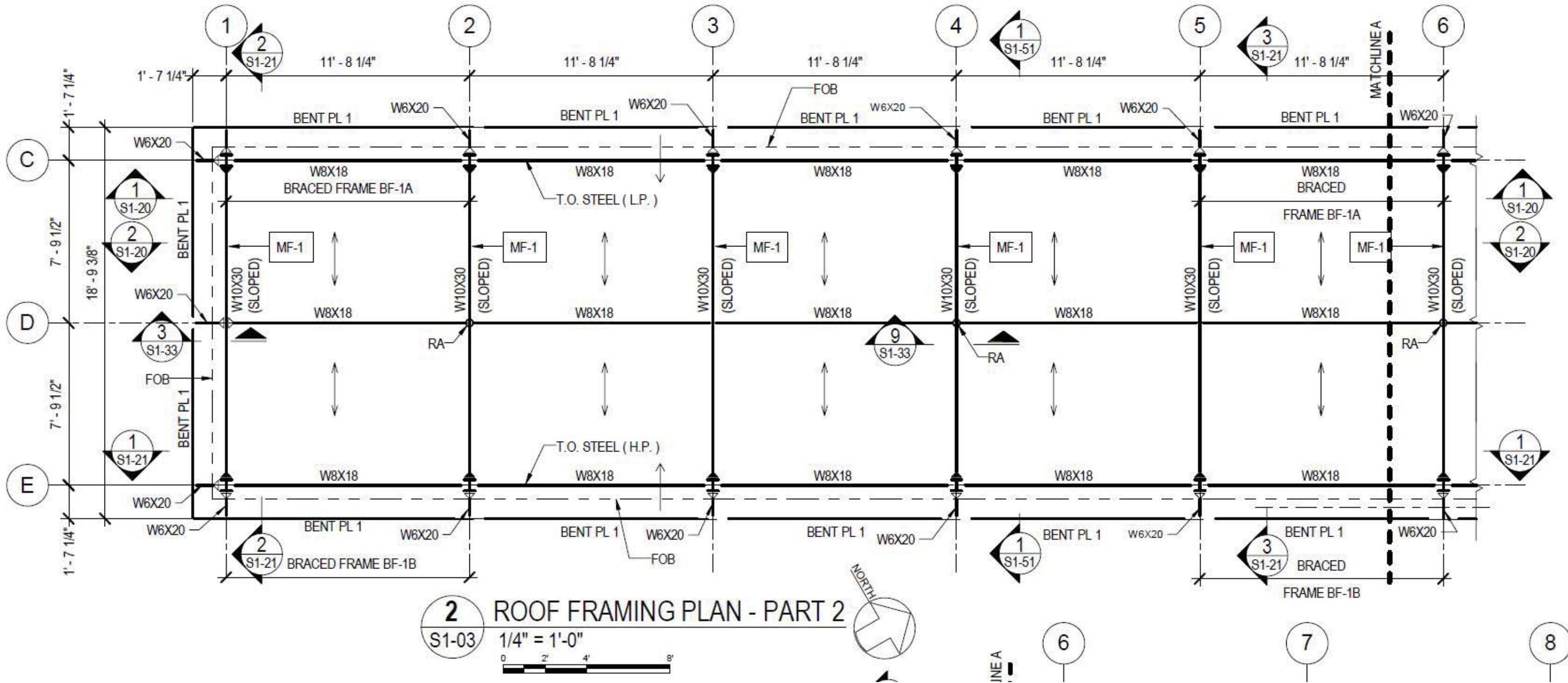
FRAMING PLANS - NEW RAMP



DECKING / SLAB:

TOPPING LAYER, SPANS BETWEEN BEAMS AND USED TO CREATE A FLAT WALKABLE SURFACE

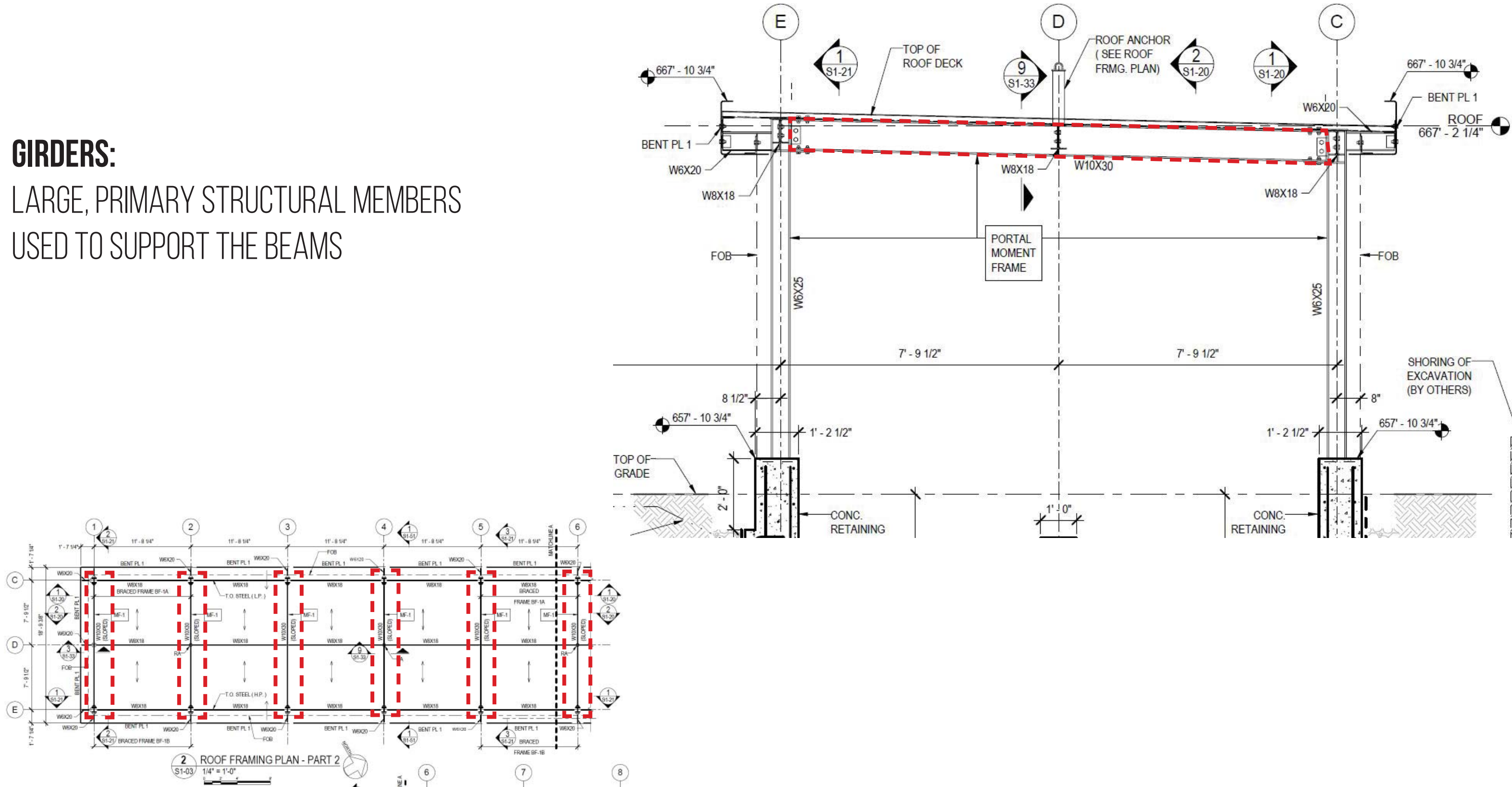
FRAMING PLANS - ROOF FRAMING



FRAMING PLANS - NEW RAMP

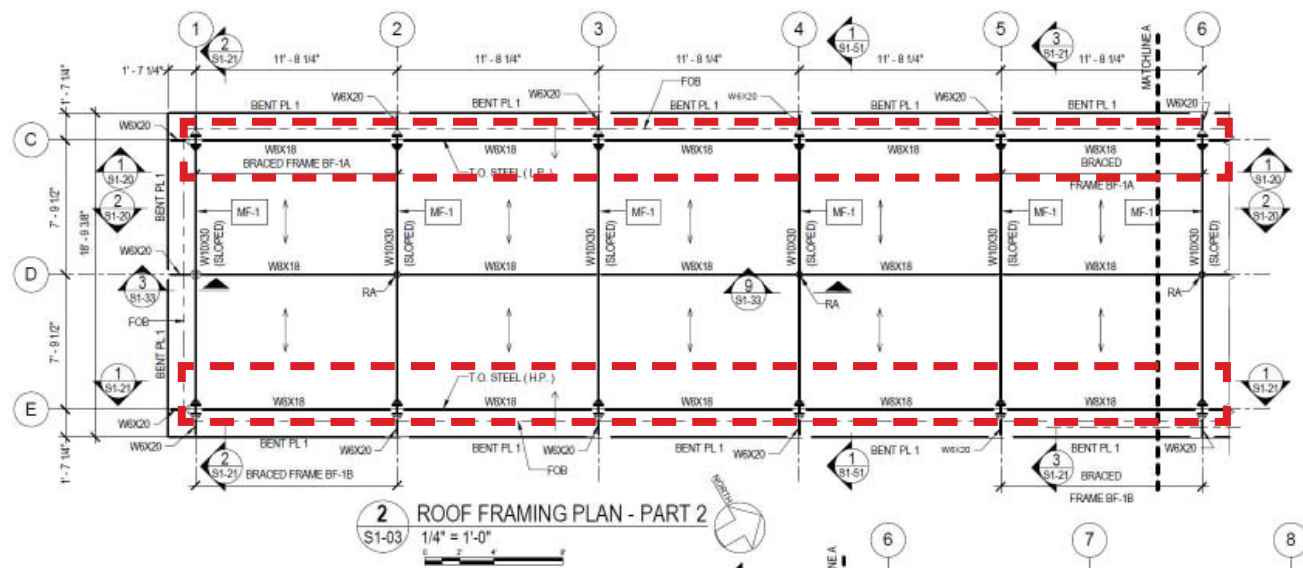
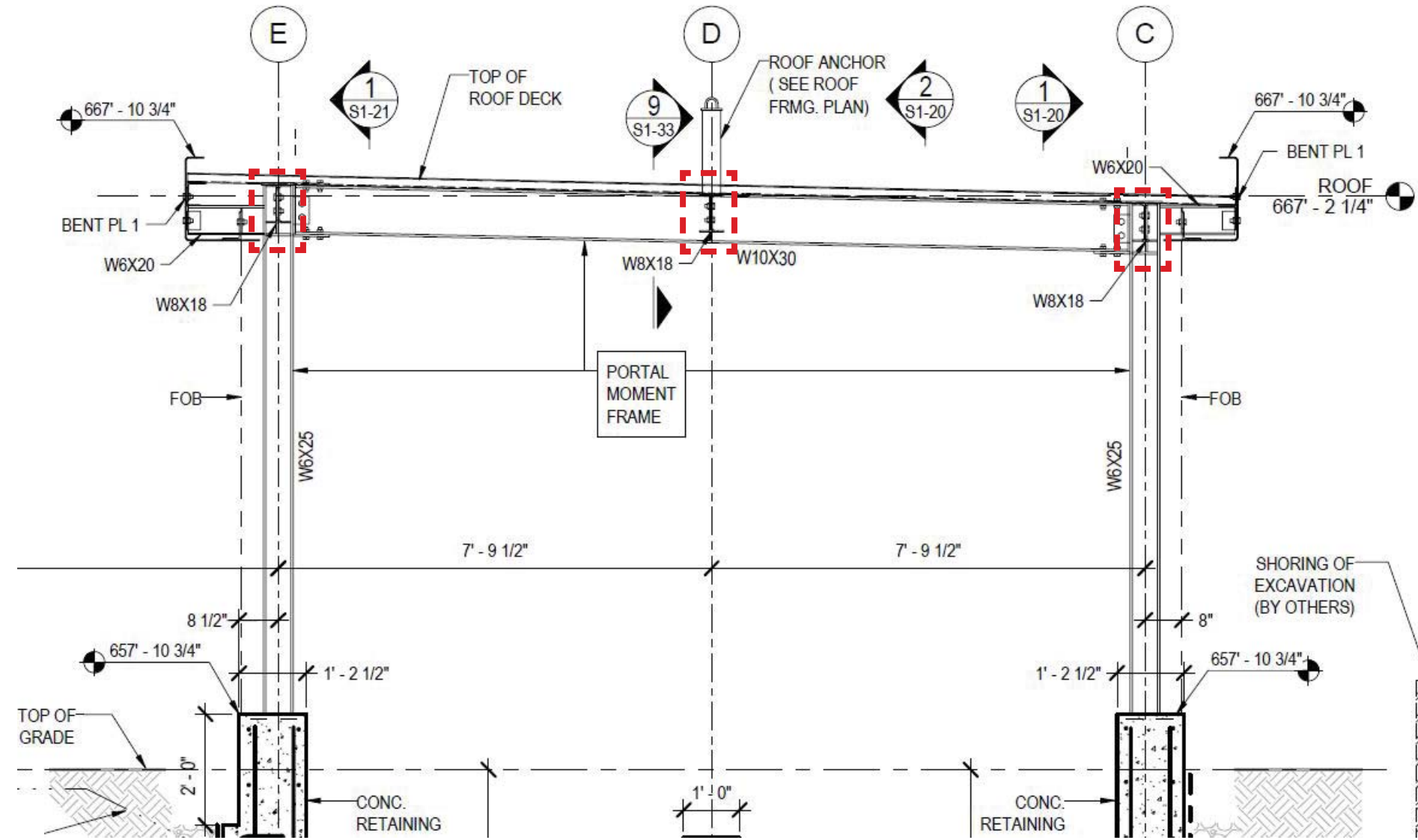
GIRDERS:

LARGE, PRIMARY STRUCTURAL MEMBERS USED TO SUPPORT THE BEAMS



FRAMING PLANS - NEW RAMP

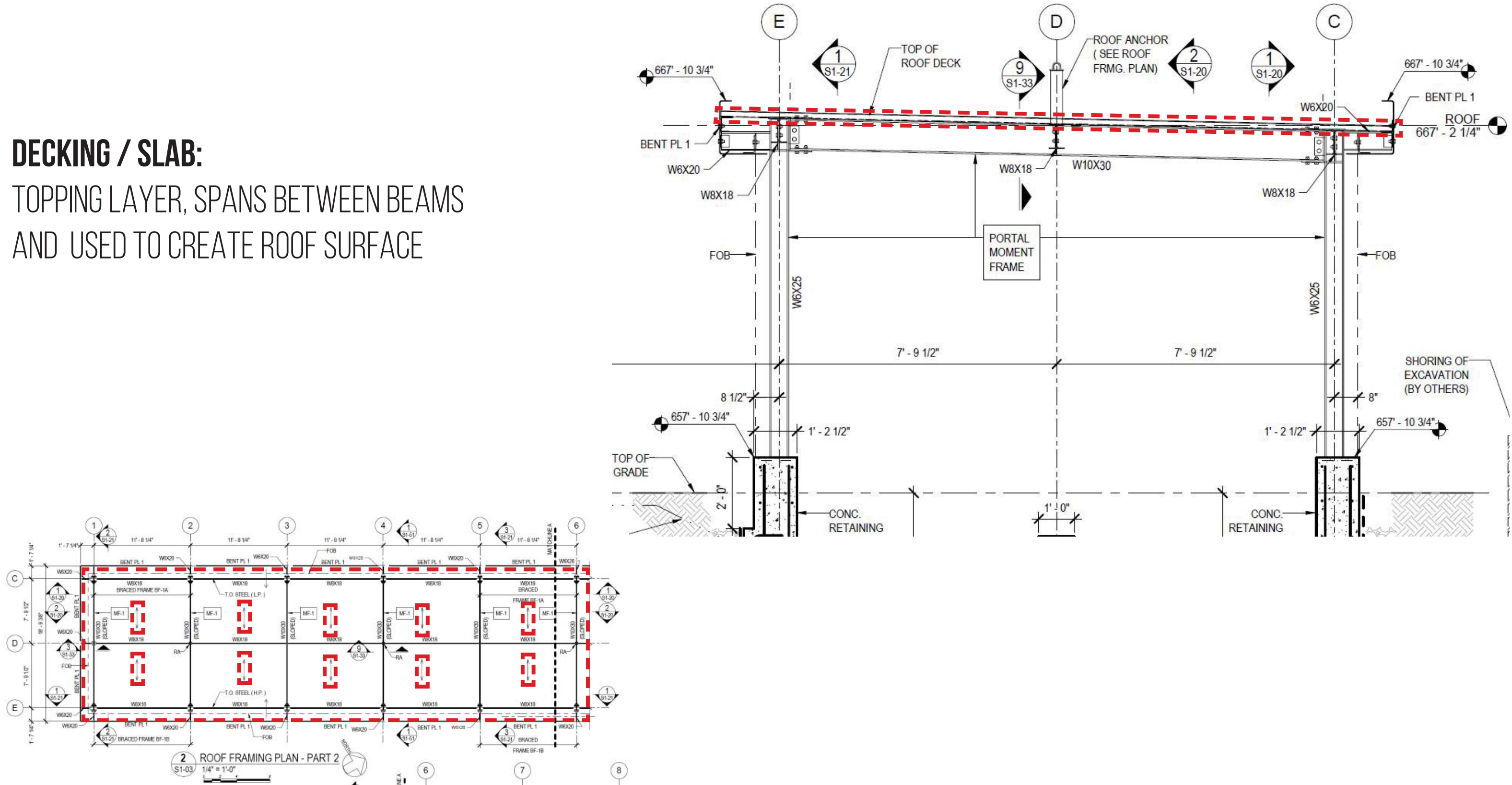
BEAMS:
SMALLER, SECONDARY MEMBERS USED TO SUPPORT THE DECKING



FRAMING PLANS - NEW RAMP

DECKING / SLAB:

TOPPING LAYER, SPANS BETWEEN BEAMS AND USED TO CREATE ROOF SURFACE



FRAMING PLANS - LET'S MAKE ONE

10" DEEP BEAMS:

CAN SPAN UP TO 25'-0"

8" DEEP BEAMS:

CAN SPAN UP TO 20'-0"

DECKING:

CAN SPAN UP TO 10'-0"

