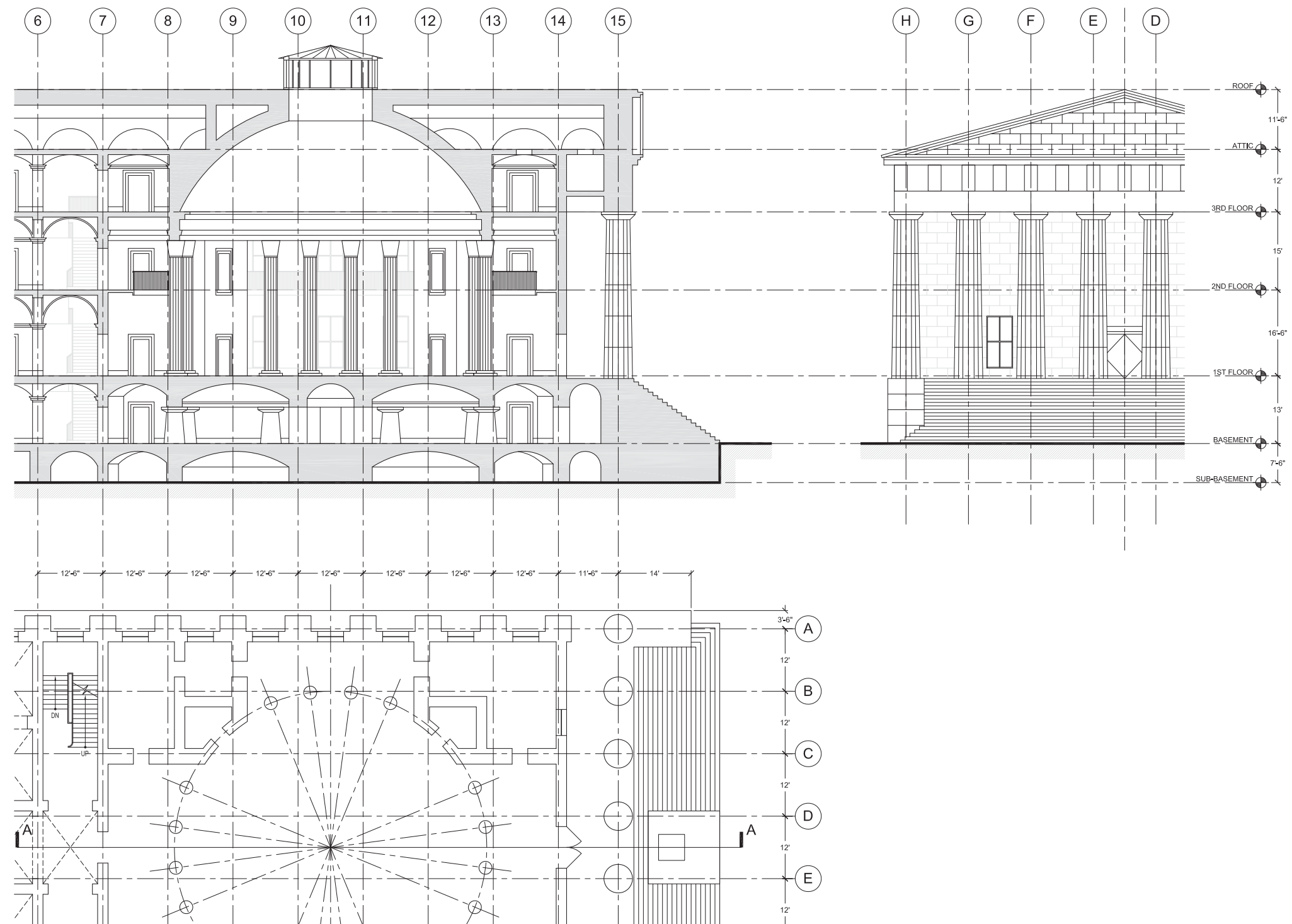
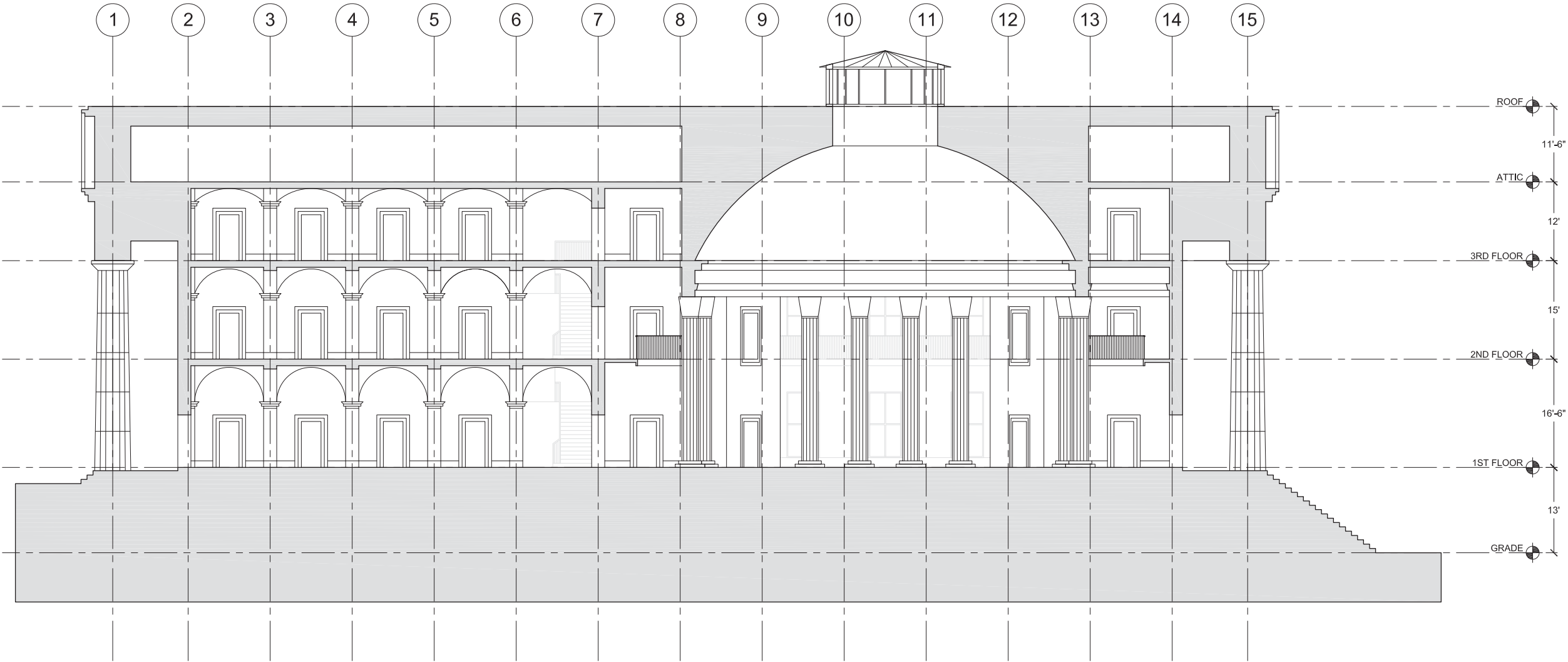


DRAWING SETUP - FEDERAL HALL

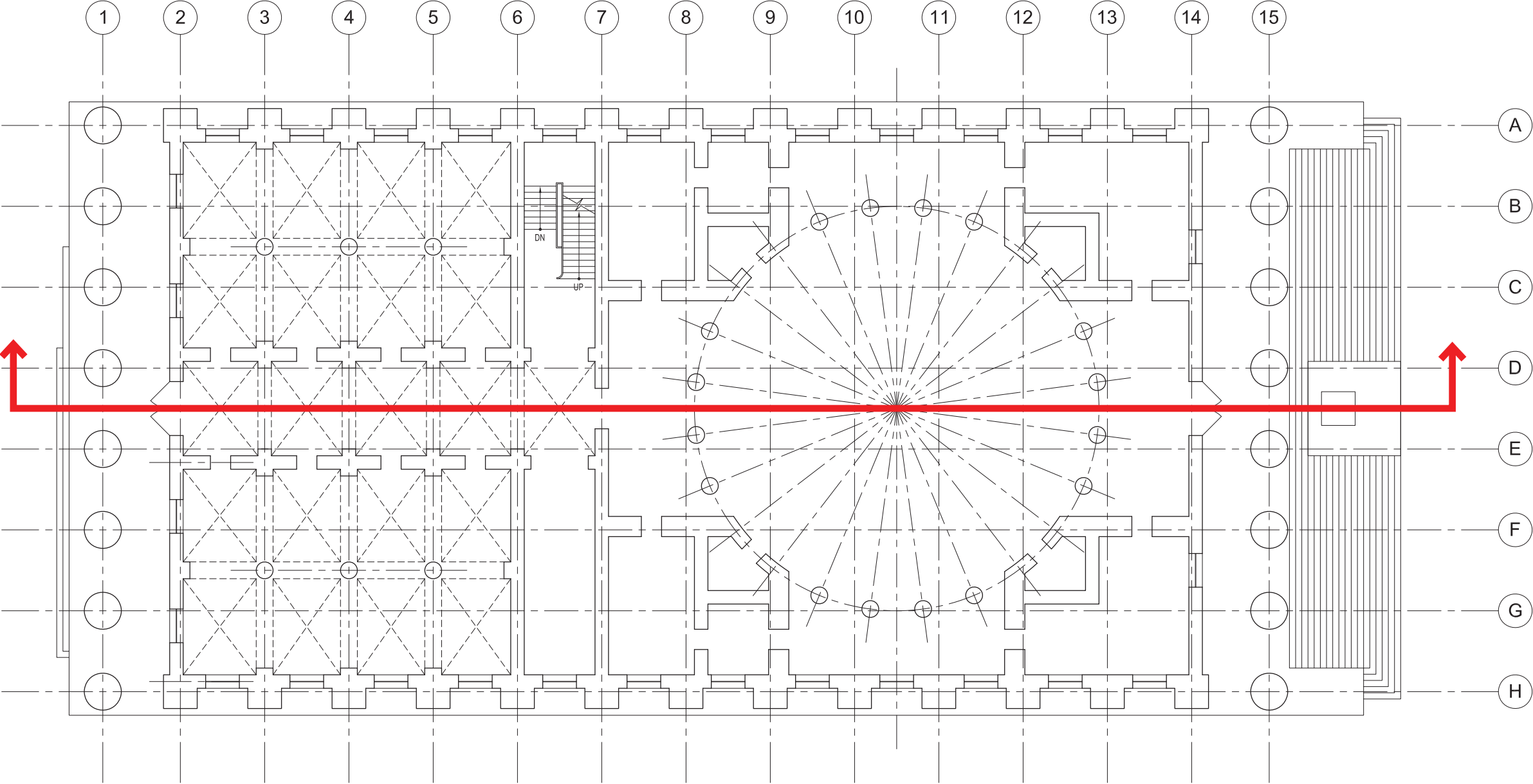


SECTION SETUP



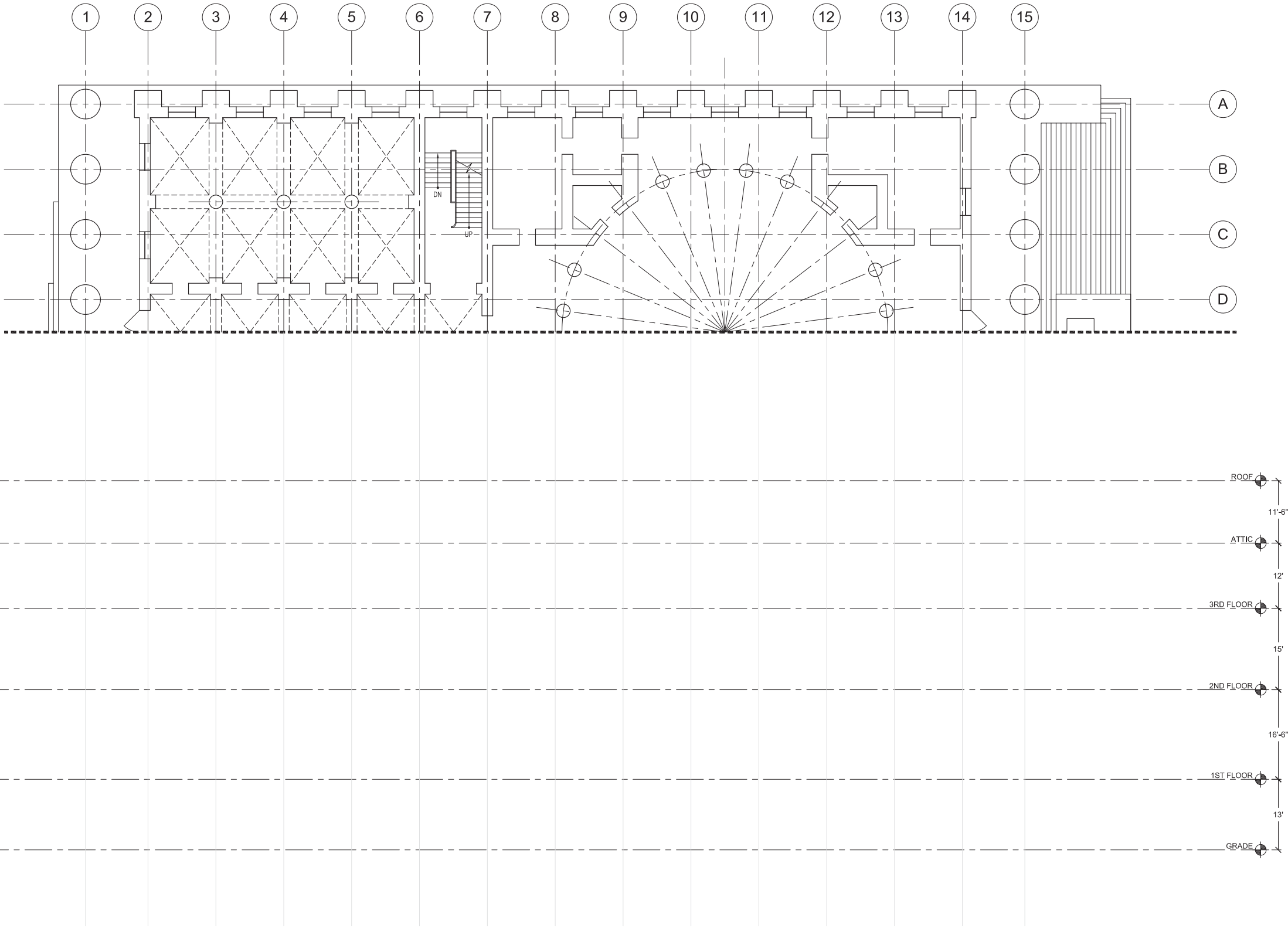
NOW LET'S FIGURE OUT HOW TO GET HERE...

SECTION SETUP



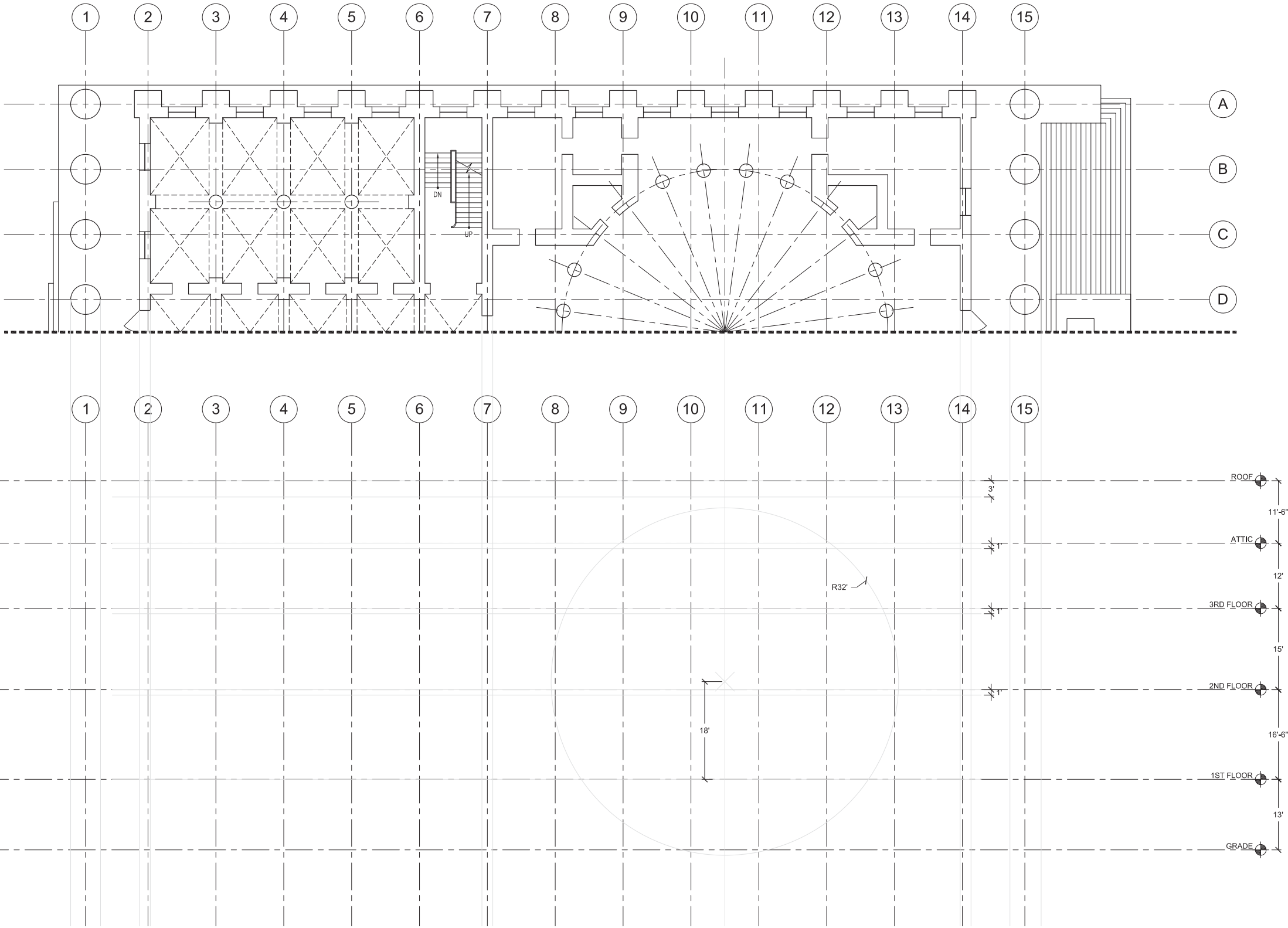
START WITH THE PLAN AND UNDERSTAND WHERE THE SECTION IS BEING CUT - RIGHT DOWN THE CENTER OF THE BUILDING

SECTION SETUP



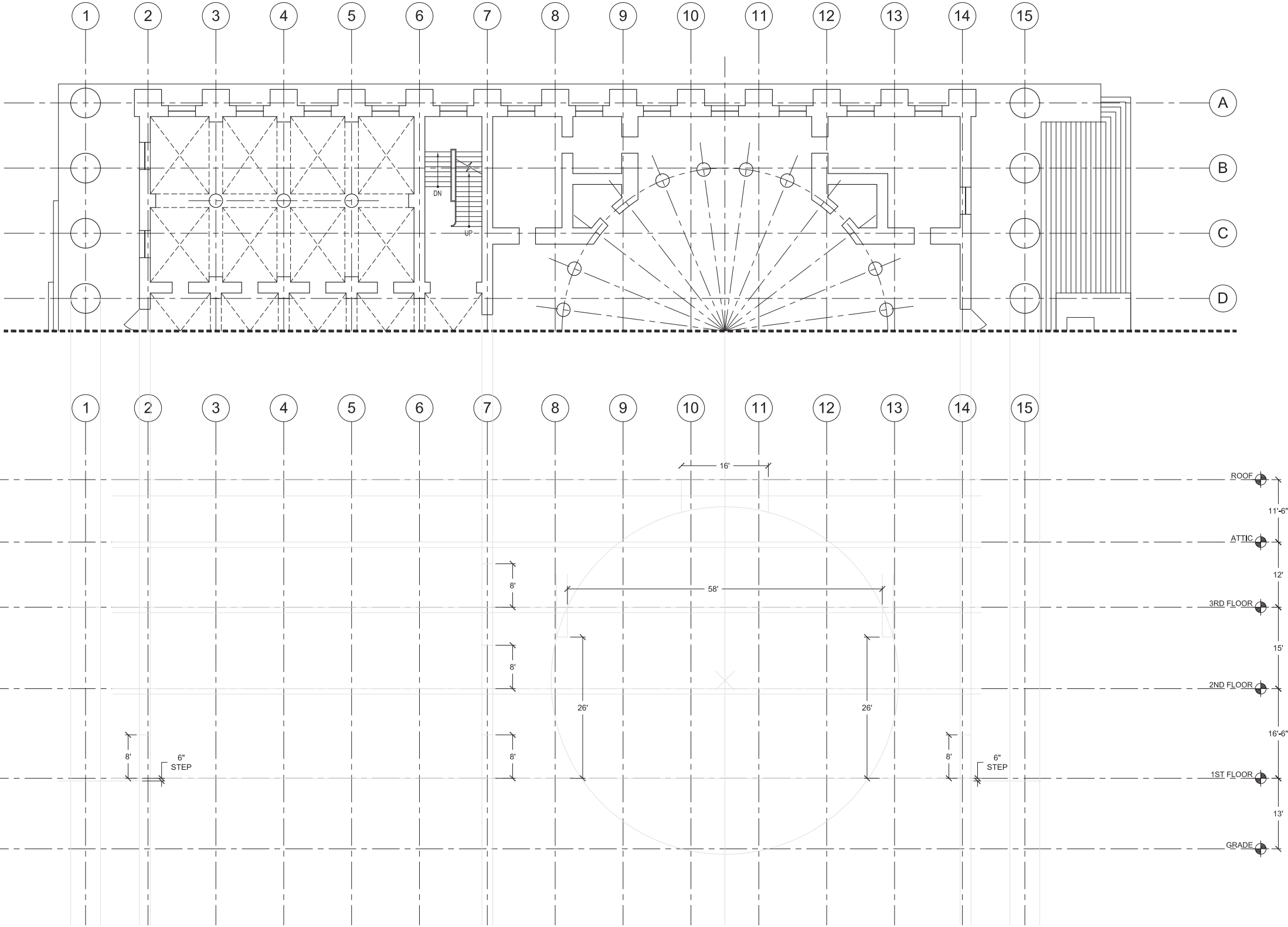
PULL GRID LINES FROM THE FLOOR PLAN AND ESTABLISH LEVELS BASED ON THE DIMENSIONS GIVEN

SECTION SETUP



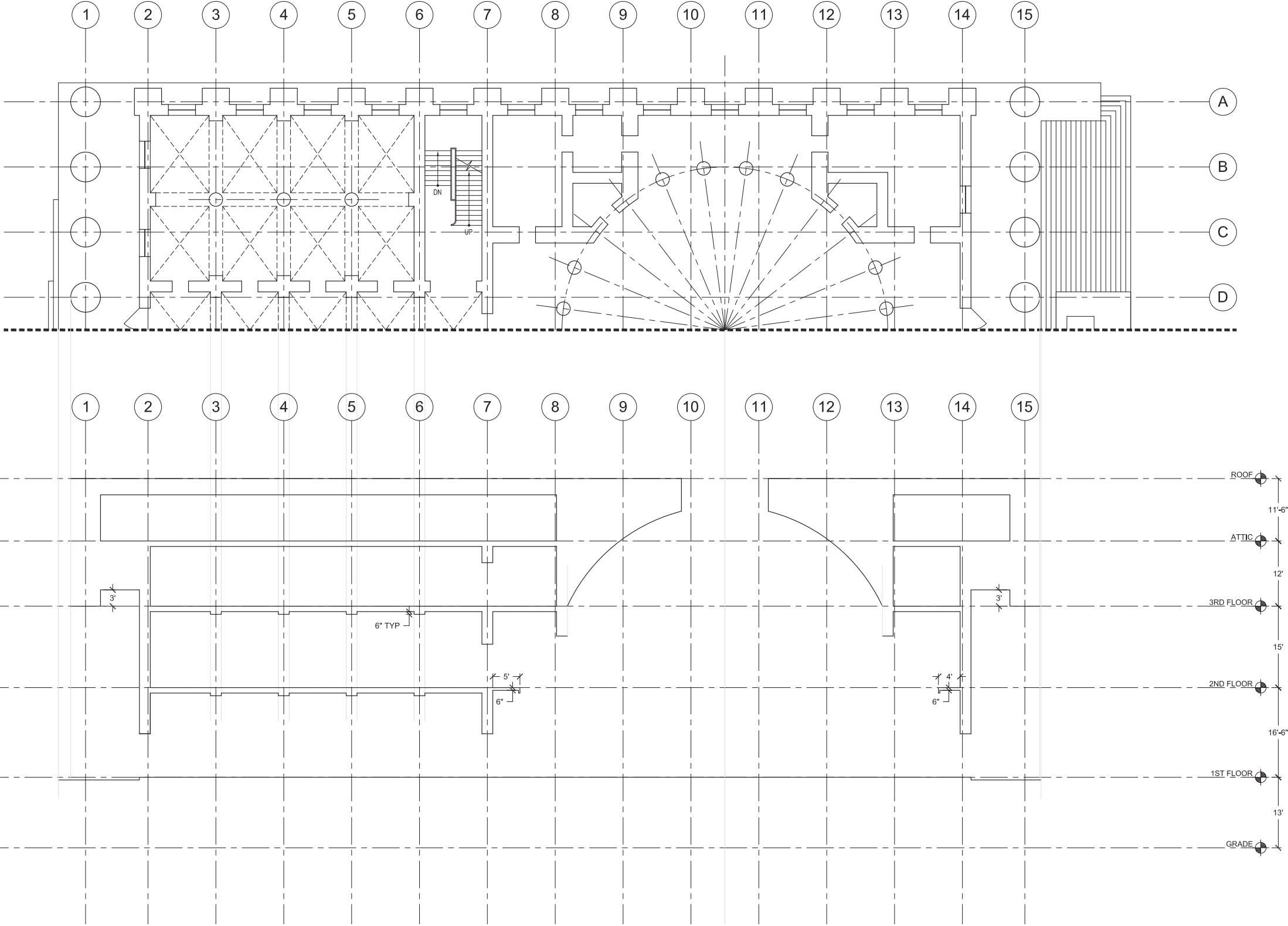
USING LIGHT CONSTRUCTION LINES, PULL DOWN WALLS AND COLUMNS, BLOCK IN FLOOR / ROOF THICKNESSES, AND LOCATE THE DOME

SECTION SETUP



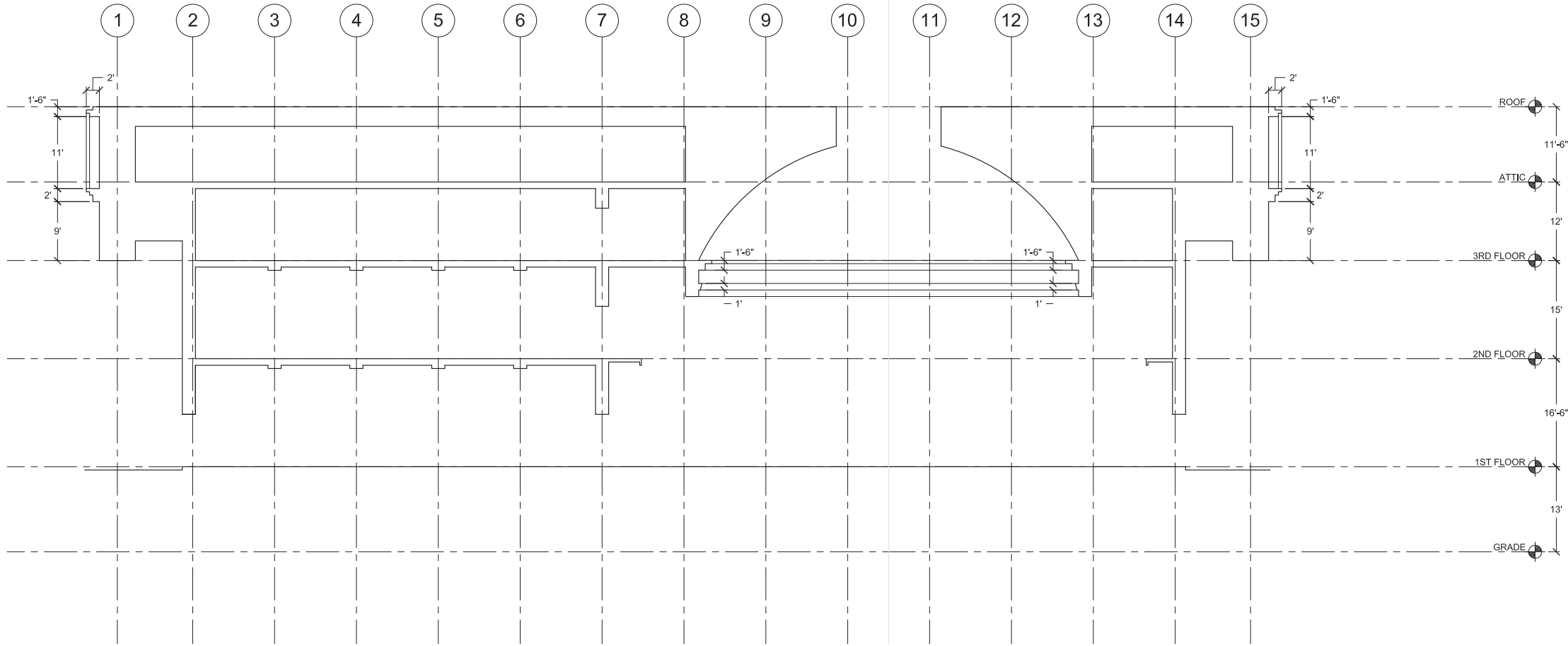
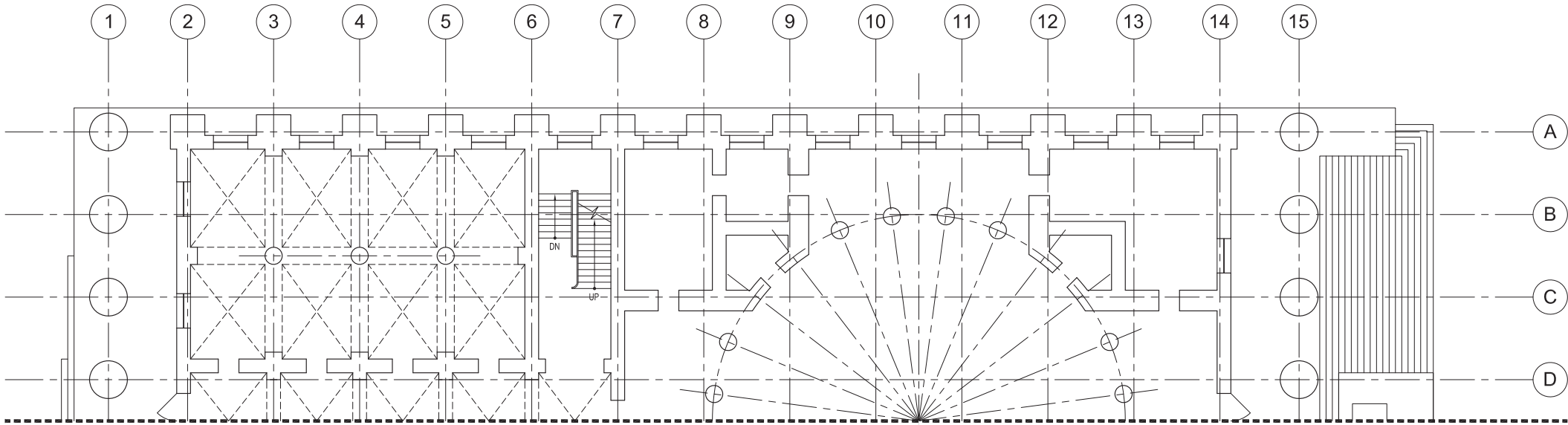
BASED ON THE DIMENSIONS GIVEN, LOCATE OPENINGS AND BEGIN DEFINING THE ROTUNDA

SECTION SETUP



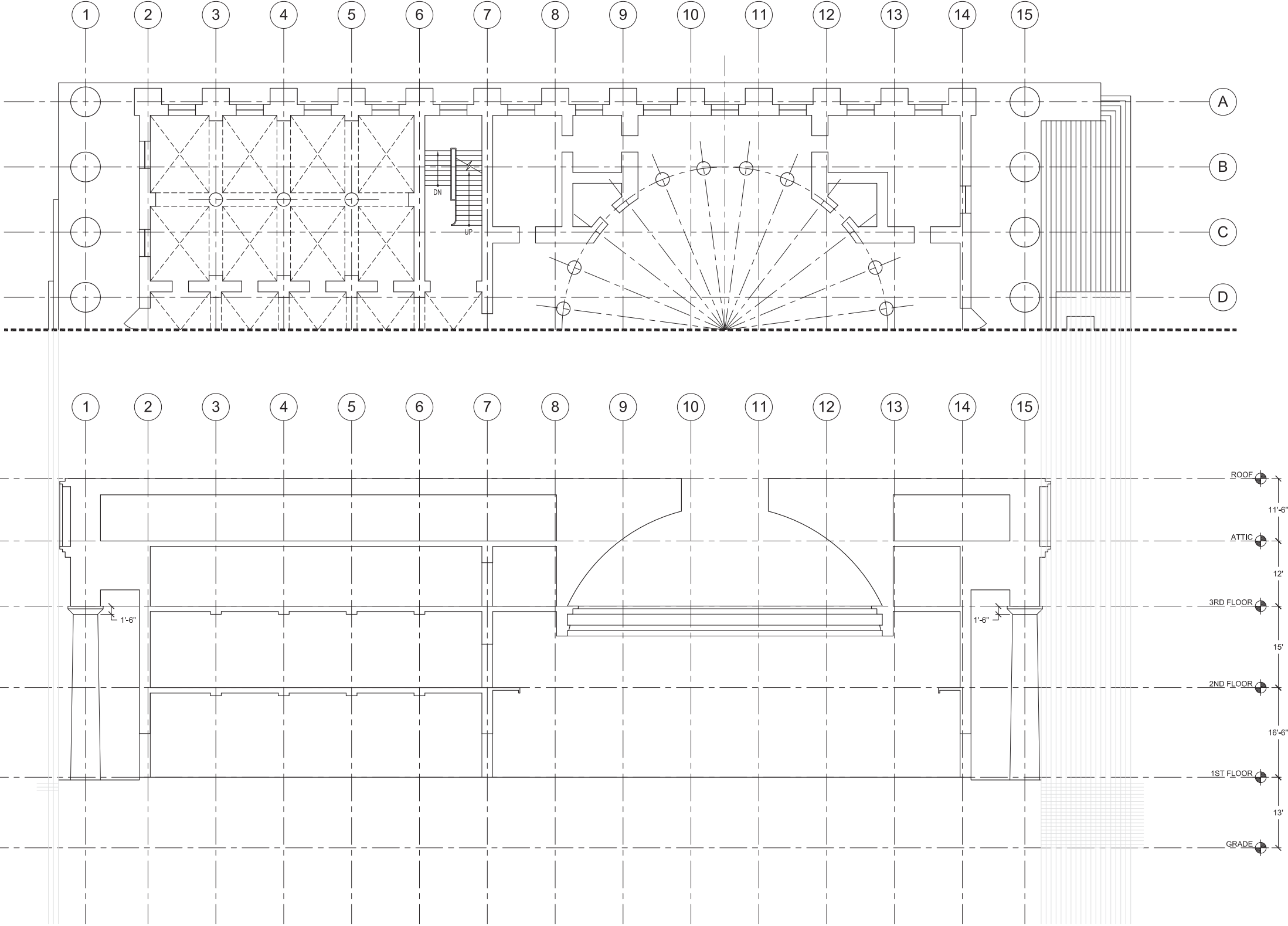
START TO DARKEN IN SECTION CUTS WHERE POSSIBLE

SECTION SETUP



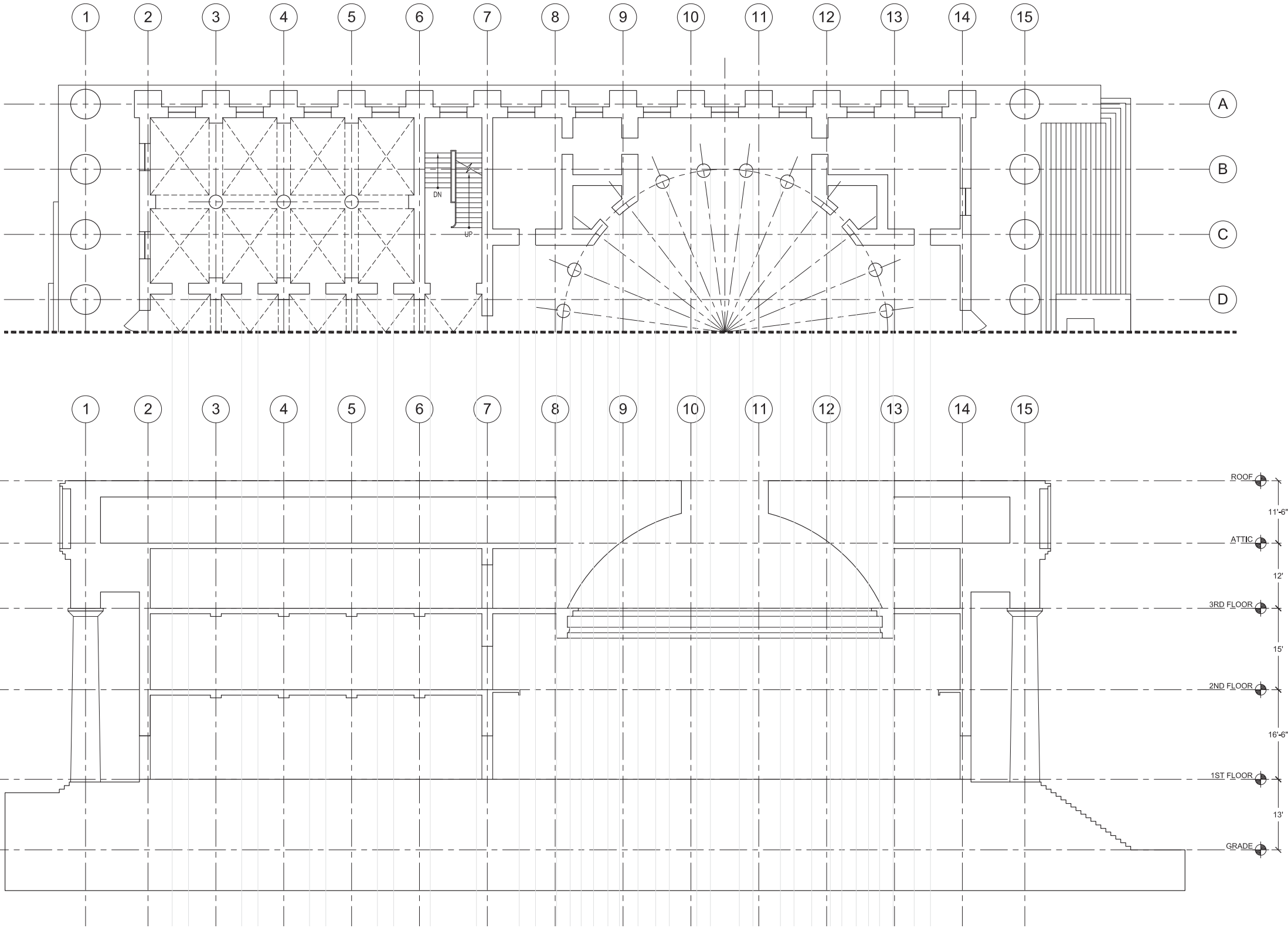
USING THE DIMENSIONS GIVEN, FINISH EXTERIOR PEDIMENT PROFILES AND INTERIOR CORNICE DETAILS

SECTION SETUP



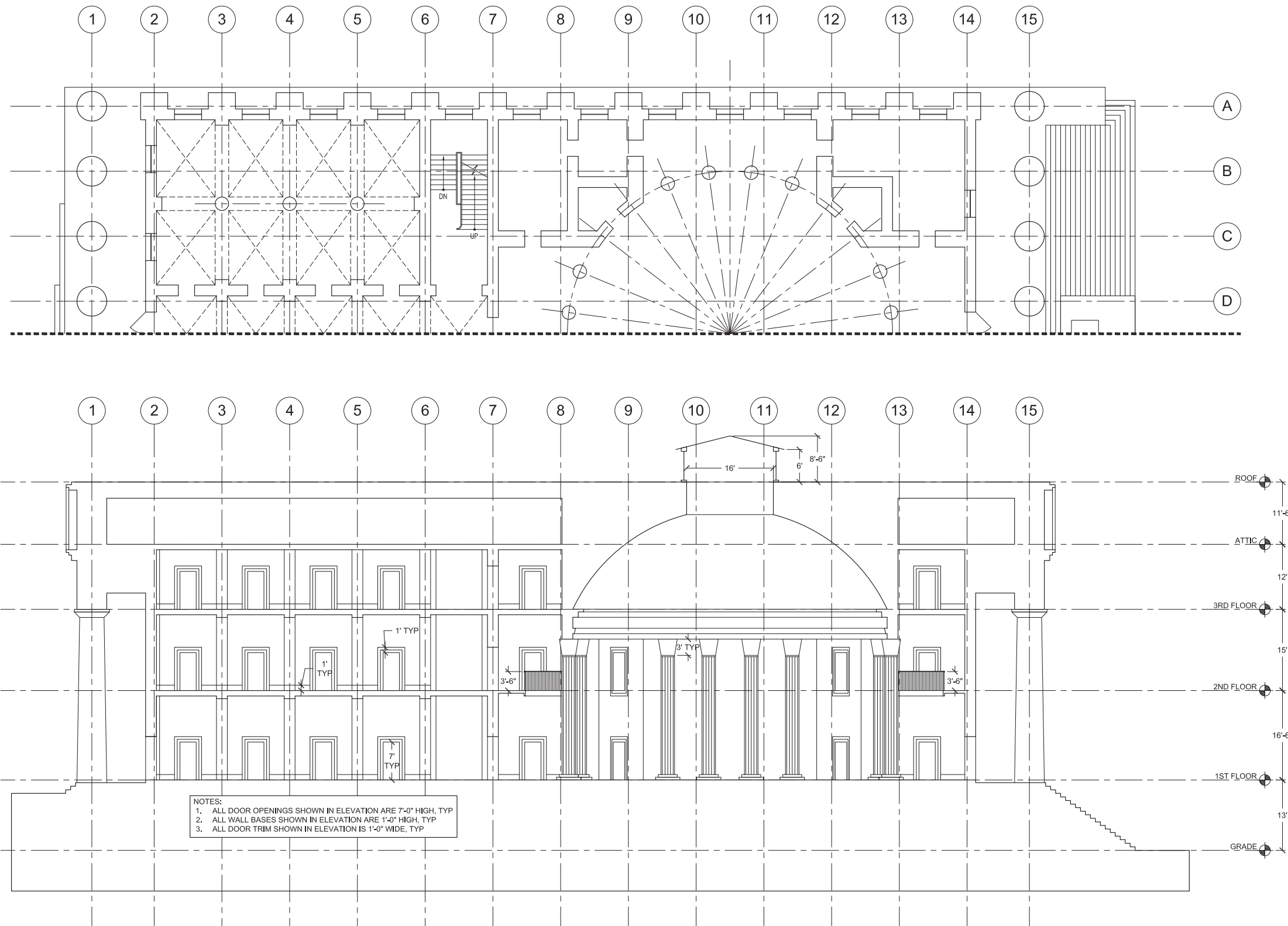
DRAW EXTERIOR COLUMNS AND START TO LAY OUT THE EXTERIOR STAIRS

SECTION SETUP



DARKEN THE REST OF THE SECTION CUT LINES, AND USING LIGHT CONSTRUCTION LINES, BEGIN PULLING DOWN INTERIOR COLUMNS AND OPENINGS

SECTION SETUP



USING THE DIMENSIONS GIVEN, FINISH DRAWING INTERIOR COMPONENTS SEEN IN ELEVATION AND LIGHT WELL ABOVE THE OCULUS